



content

	<ul style="list-style-type: none"><li>railing system cp-1400..... 12</li><li>railing system cp-1402..... 14</li><li>accessoires for system cp-1400 und cp-1402..... 16</li><li>railing system cp-1440 ..... 18</li><li>accessoires ..... 20</li></ul>



INFO CURRENT RULES REGARDING TRAV

Armed with information on the safety aspects of balustrades, you will confidently follow the latest regulations and guidelines when planning your projects. This saves you time and money. We can also extend this service with personal consultation. Talk to us.

planning process  
page 234

design table Kat C  
page 236

design table Kat B  
page 238

overview TRAV  
page 235

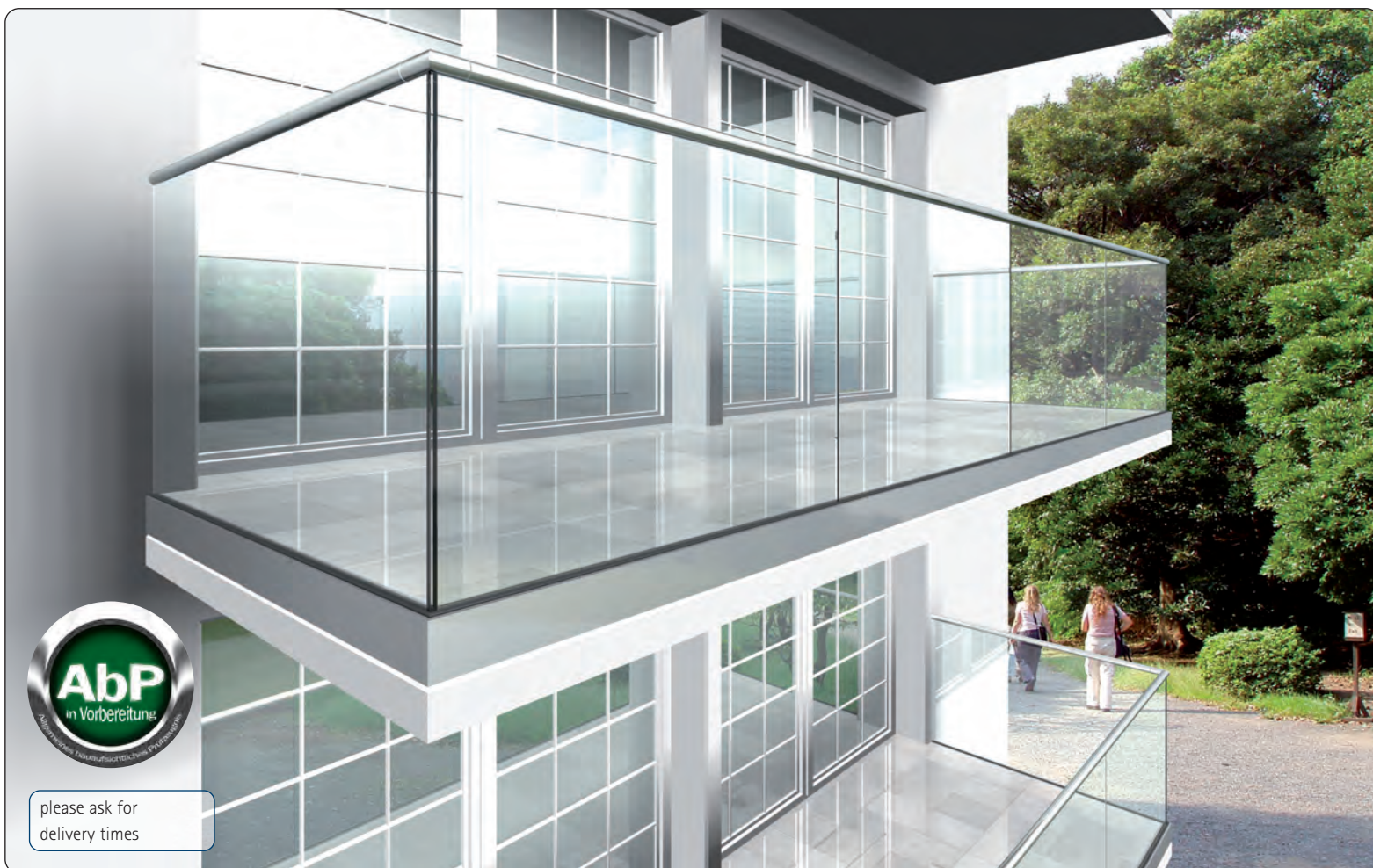


- railing system cp-1400
- cp-1402
- cp-1440





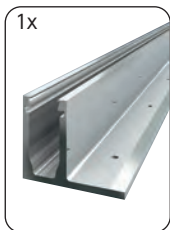
- system profile cp-1400 for floor mounting



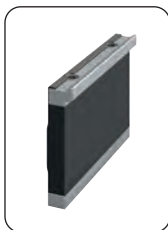
## System profile for floor mounting

The cp-1400 system profile has been developed specifically for modern, postless balustrade architecture. Postless fall-protection railing offers maximum transparency. With early planning, it is extremely easy to implement and assemble, thanks to the development of an integrated adjustment feature for aligning the glass panes. General type approval is pending for the clamp system. This eliminates the need for costly proofs for the specified glass dimensions.





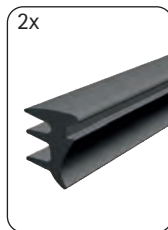
1400-1E123-  
base profile for  
floor mounting



1400-10EPDM  
clamping jaw



1400-2EPDM-  
lower glazing  
profile



1400-6KU3-5000  
upper glazing  
profile

item no.	article name	length	material	finish	
1400-E123-17-5000	sytem profile set	5000 mm	aluminium	stainless steel effect	17,52 mm
1400-E123-17-V	sytem profile set max. 5000 mm		aluminium	stainless steel effect	17,52 mm
1400-E123-21-5000	sytem profile set	5000 mm	aluminium	stainless steel effect	21,52 mm
1400-E123-21-V	sytem profile set max. 5000 mm		aluminium	stainless steel effect	21,52 mm

stainless steel effect = polished aluminium, silver anodized

#### INFO

You will find a checklist for your planning purposes on page 232.

#### INFO

Items labelled with V are cut to length and mitred upon request to adapt them to your installation site.

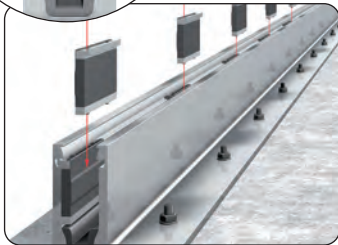
#### ■ floor mounting



1. affix the profile



2. insert the lower glazing profile



3. insert the clamping jaws



4. insert the glass



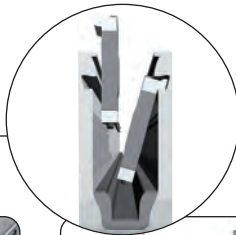
5. align the glass and fasten



6. insert upper glazing profile



7. finished system with screed cover



Insertion  
from above!





- system profile cp-1402 for front mounting



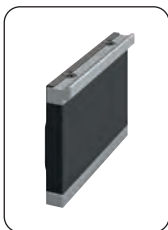
## System profile for front mounting

The cp-1402 system profile is optimal for modernizing buildings. Being fastened at the front, the clamp profile provides a clear view down to floor level. The integrated adjustment system for aligning the glass panes ensures perfect assembly. It doesn't get any clearer than that. After assembling the glass, the system is completed with a front panel. General type approval is pending for the clamp system. This eliminates the need for costly proofs for the specified glass dimensions.





1402-1E123-  
base profile for  
front mounting



1400-10EPDM  
clamping jaw



1400-2EPDM-  
lower glazing  
profile



1400-6KU3-5000  
upper glazing  
profile



1402-2E123-5000  
panel

item no.	article name	length	material	finish	
1402E123-17-5000	sytem profile set	5000 mm	aluminium	stainless steel effect	17,52 mm
1402E123-17-V	sytem profile set	max. 5000 mm	aluminium	stainless steel effect	17,52 mm
1402E123-21-5000	sytem profile set	5000 mm	aluminium	stainless steel effect	21,52 mm
1402E123-21-V	sytem profile set	max. 5000 mm	aluminium	stainless steel effect	21,52 mm

stainless steel effect = polished aluminium, silver anodized

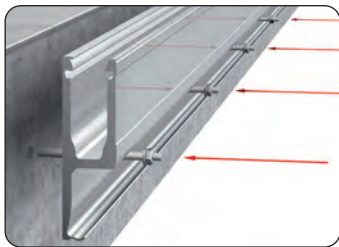
#### INFO

You will find a checklist for your  
planning purposes on page 232.

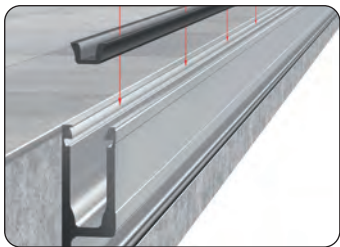
#### INFO

Items labelled with V are cut to  
length and mitred upon request  
to adapt them to your installa-  
tion site.

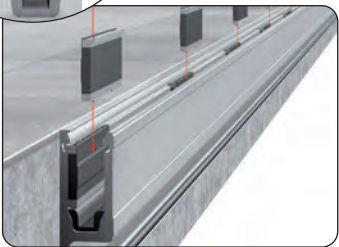
#### front mounting



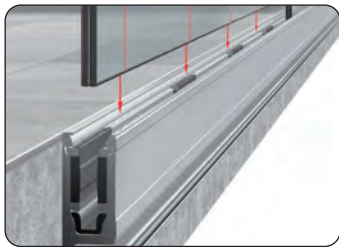
1. affix the profile



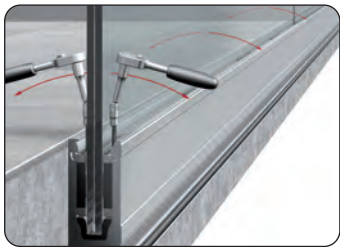
2. insert the lower glazing profile



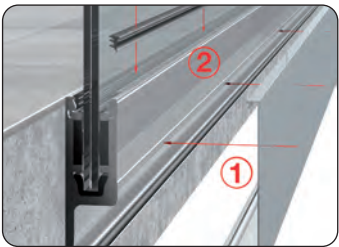
3. insert the clamping jaws



4. insert the glass



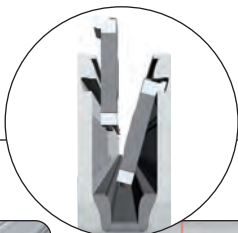
5. align the glass and fasten



6. fasten the cover panel and insert  
the upper glass seal

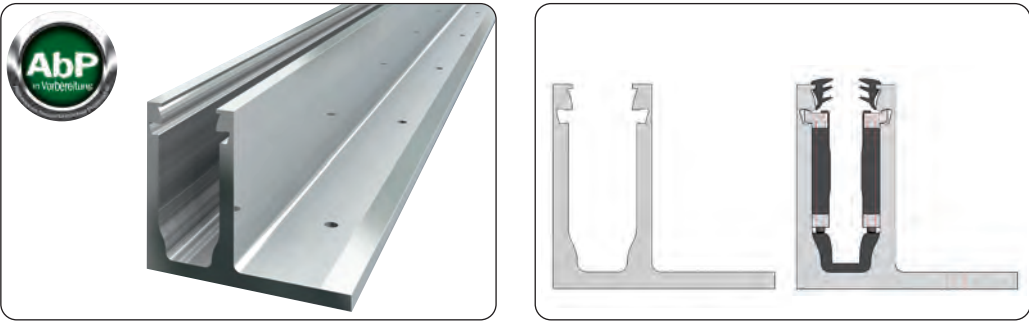


7. finished system with cover panel



Insertion  
from above!

base profile for floor mounting

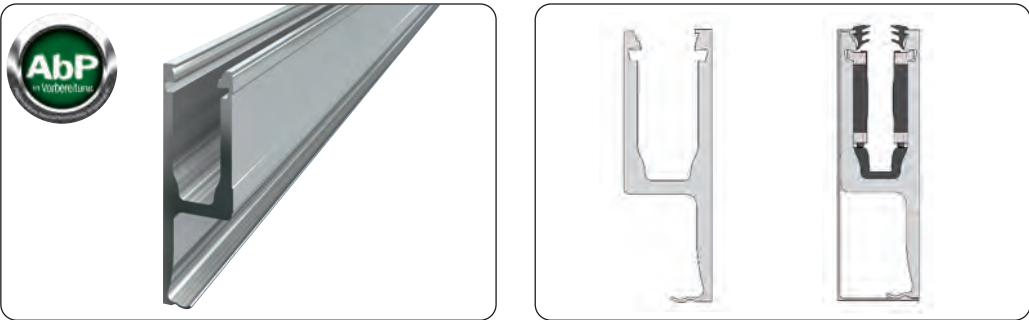


item no.	length	material	finish	
1400-1E123-17-5000	5000 mm	aluminium	stainless steel effect	17,52 mm
1400-1E123-21-5000	5000 mm	aluminium	stainless steel effect	21,52 mm

INFO

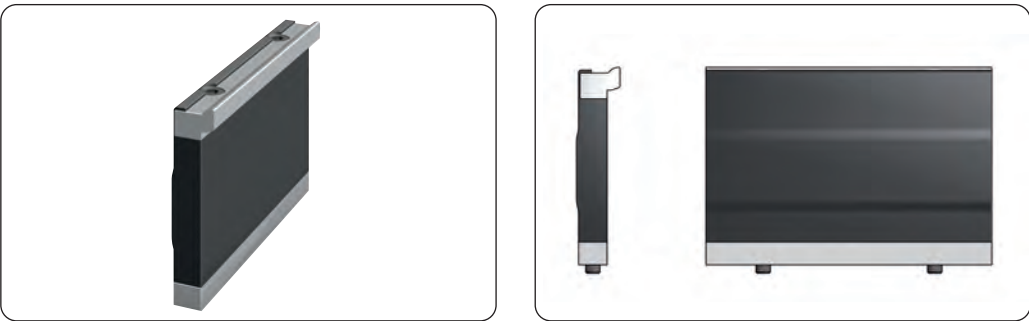
Stainless steel effect = polished aluminium, silver anodized. Other surfaces available upon request.

base profile for front mounting



item no.	length	material	finish	
1402-1E123-17-5000	5000 mm	aluminium	stainless steel effect	17,52 mm
1402-1E123-21-5000	5000 mm	aluminium	stainless steel effect	21,52 mm

clamping jaw



item no.	material
1400-10EPDM	aluminium/plastic





■ lower glazing profile



item no.	material	length	
1400-2EPDM-17-5000	plastic	5000 mm	17,52 mm
1400-2EPDM-21-5000	plastic	5000 mm	21,52 mm

■ upper glazing profile



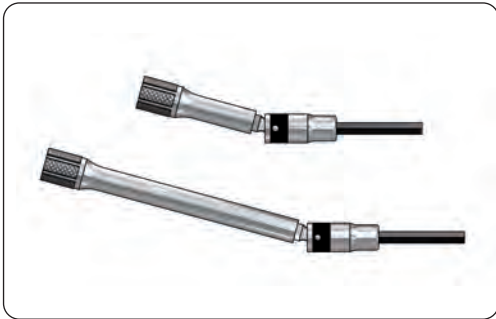
item no.	material	length
1400-6KU3-5000	plastic	5000 mm

■ panel for cp-1402

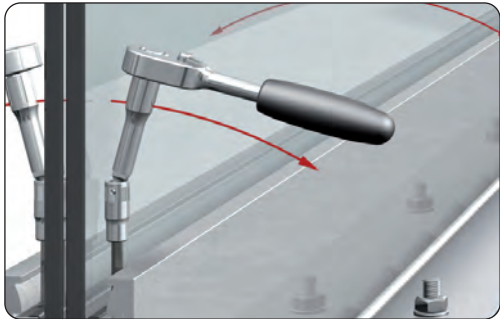


item no.	material	finish
1402-2E123-5000	aluminium	stainless steel effect

■ assembly tool



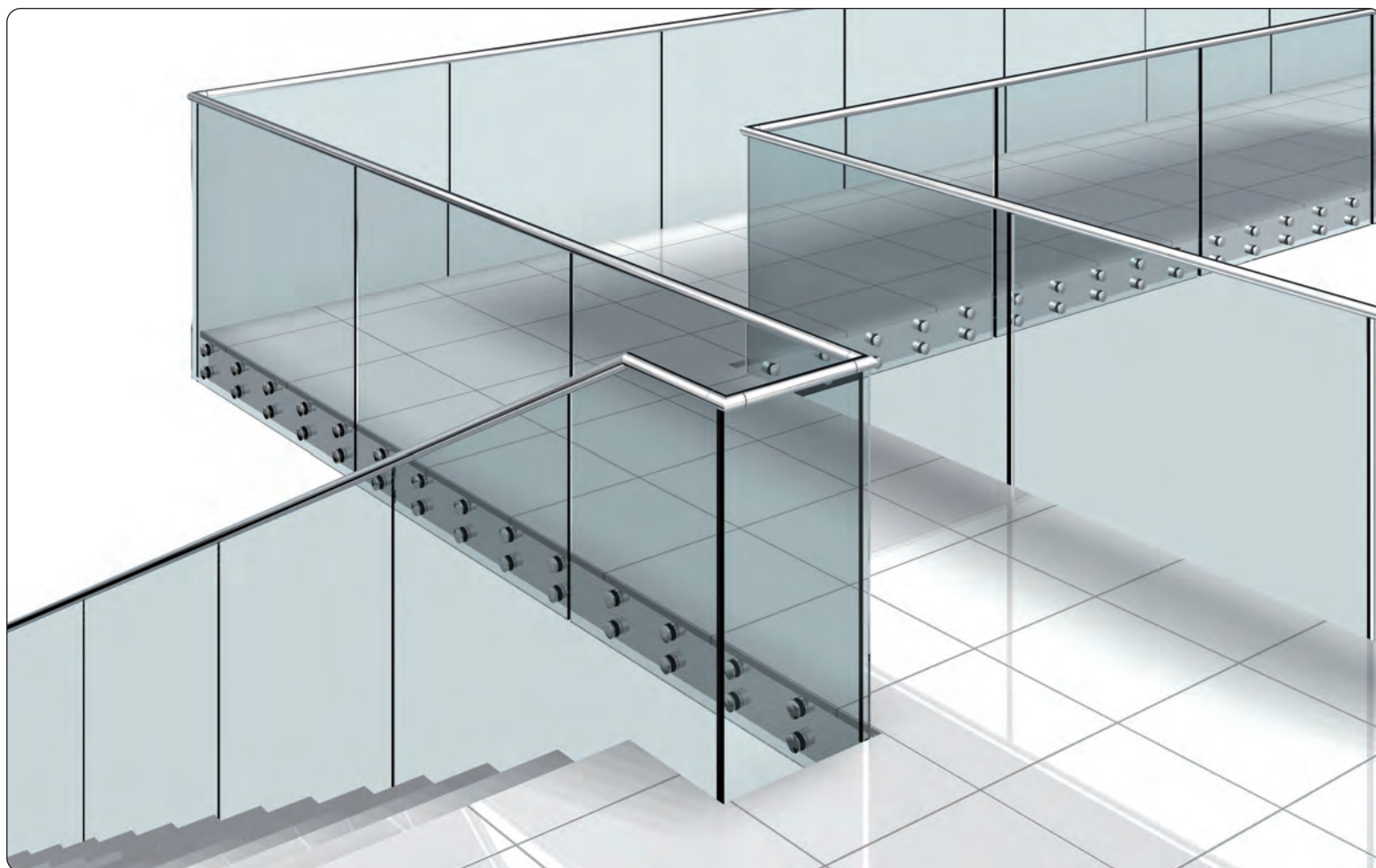
item no.	length
1411ST8-50	50 mm
1411ST8-100	100 mm







■ balustrade system cp-1440

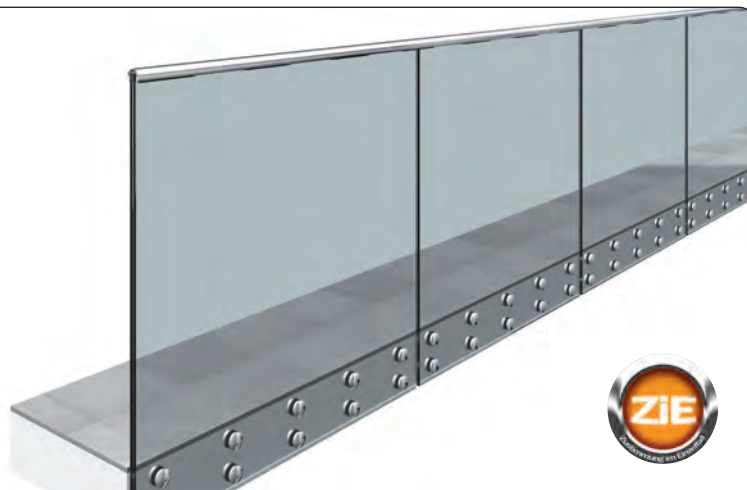


## Balustrade system with point fixings

The cp-1440 balustrade system requires no posts. Fall-protection railing without posts offers maximum transparency. This is where the TRAV Category C point fixings come in. Structural analyses exist for various models.

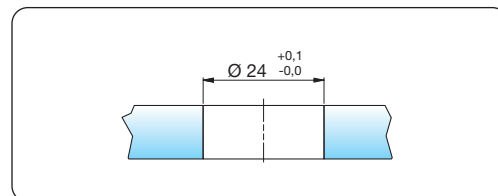
### INFO

You will find TRAV-compliant point fixings starting on page 110 and information on the cp-1440 balustrade system on page 231.





## ■ TRAV-compliant point fixings



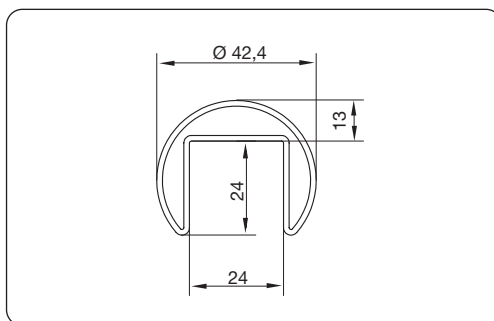
accessoires	included
Z060	DIN913 M10 x 90 mm

item no.	Ø	head	material
7073VA	72	flat	A2
7077VA	72	beveled	A2

**INFO**

Further information for point fixing according to TRAV can be found on page 114 and 115.

## ■ slotted round tube

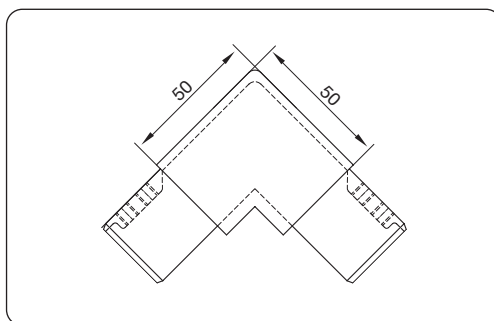


item no.	Ø tube x s	L	material	finish
10213642A4	42,4 x 1,5	6000 mm	A4	finish 240
10213642A4-V	42,4 x 1,5	cut to length	A4	finish 240

**INFO**

information for point fixing according to TRAV category B can be found on page 238.

## ■ corner connector vertical, for slotted round tube

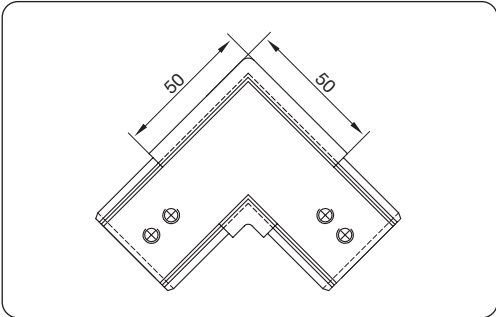


item no.	Ø tube x s	material	finish
10213742A4	42,4 x 1,5	A4	finish 240



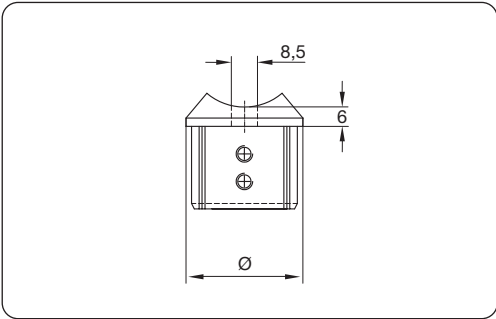


■ corner connector horizontal, for slotted round tube



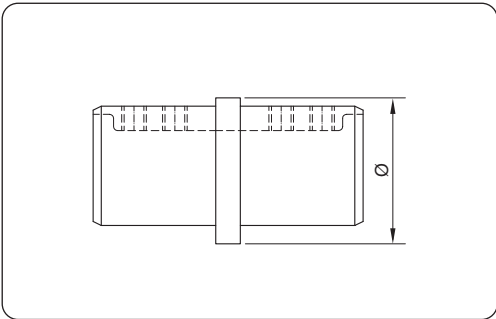
item no.	Ø tube x s	material	finish
10213842A4	42,4 x 1,5	A4	finish 240

■ slotted round tube connector 90°



item no.	Ø tube x s	adapter	material	finish
10213942A4	42,4 x 1,5	Ø 42,4	A4	finish 240

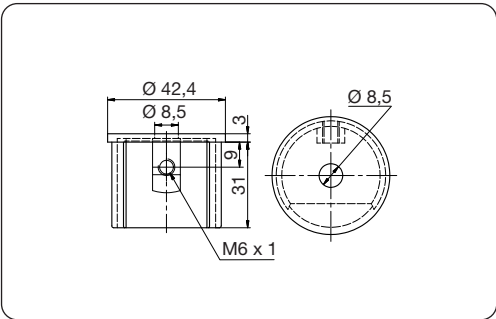
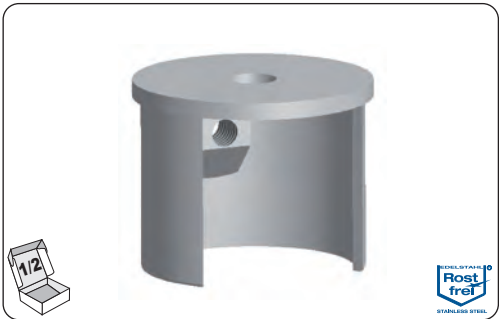
■ slotted round tube connector 180°



item no.	Ø tube x s	material	finish
10214042A4	42,4 x 1,5	A4	finish 240

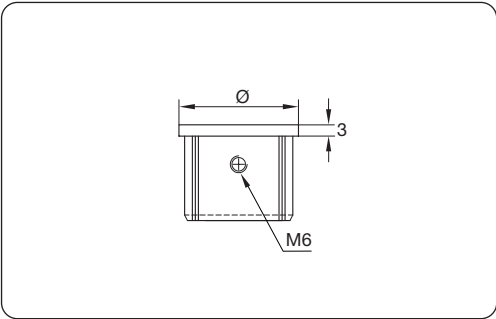


■ slotted round tube connector, wall mounting



item no.	Ø tube x s	material	finish
10233842A4	42,4 x 1,5	A4	finish 240

■ slotted round tube end cap, flat



item no.	Ø tube x s	material	finish
10214142A4	42,4 x 1,5	A4	finish 240

■ elastomeric profile for slotted tube systems



item no.	glass thickness	Ø
10214542KU	8 - 10,76	42,4 x 1,5
10214642KU	12 - 16,76	42,4 x 1,5
10214742KU	16,76 - 18	42,4 x 1,5
10214842KU	20 - 21,52	42,4 x 1,5