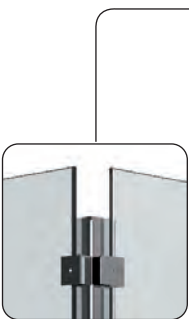




content



- cp-glass *barrier* ..... 60-69
- post sets for inserting into concrete foundation ..... 62-64
- post sets for floor mounting ..... 66-68

INFO

CURRENT RULES REGARDING GLASS BARRIERS

Armed with information on the safety aspects of balustrades, you will confidently follow the latest regulations and guidelines when planning your projects. This saves you time and money. We can also extend this service with personal consultation. Talk to us.

general information  
page 228

design table  
page 229

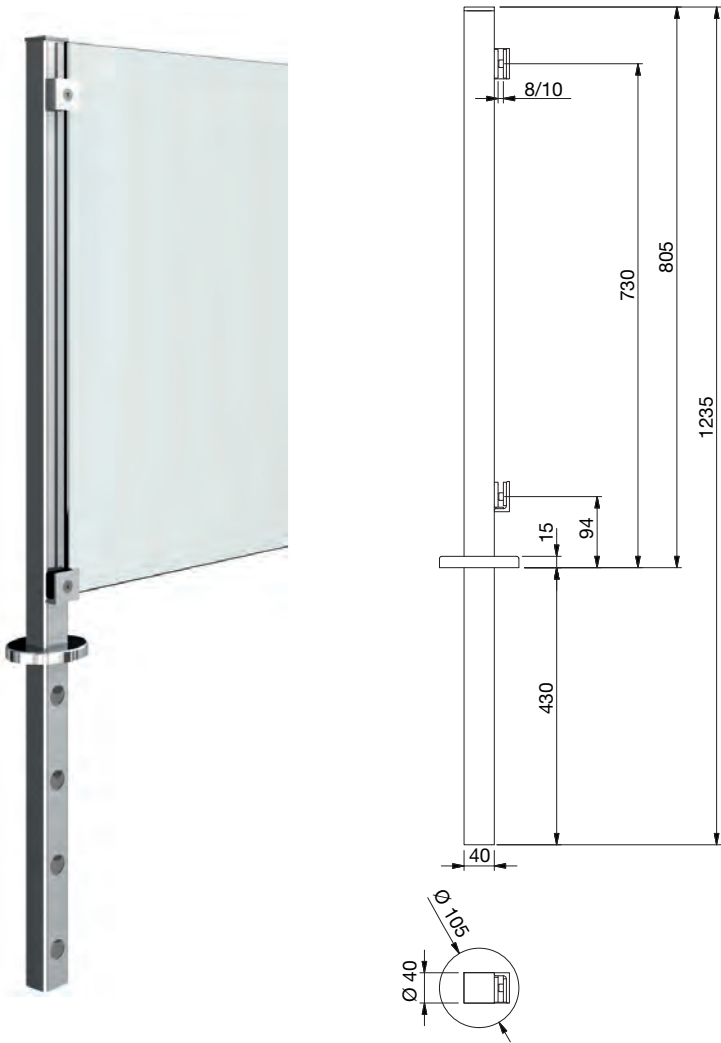
60



■ cp-glass *barrier*




■ end post set for cp-glass *barrier* for insertion into concrete foundation, installable on right and left



INFO


You will find further information on our cp-glass *barrier* starting on page 228.

SET-7351VA2-800

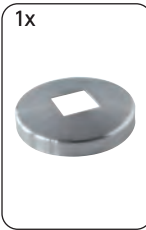
  
8-10 mm

set comprised of

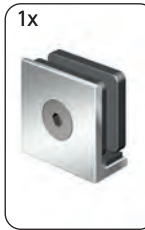
- 1x




post
- 1x




cover plate
- 1x



clamp bottom
- 1x



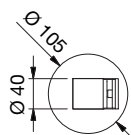
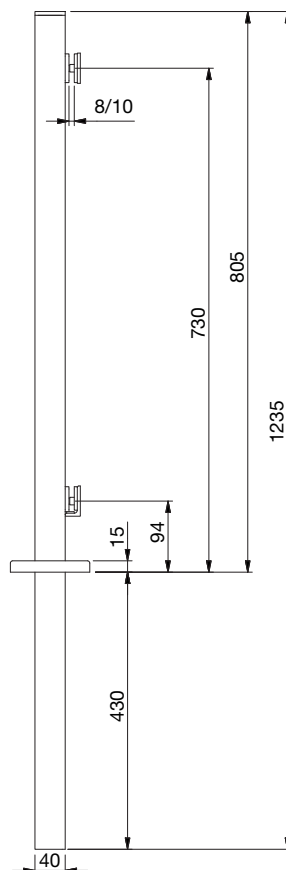
clamp top
- 1x



end cap



- middle post set for cp-glass *barrier* for insertion into concrete foundation, 180°



#### INFO

You will find further information on our cp-glass *barrier* starting on page 228.

SET-7350VA2-800



8-10 mm



set comprised of



post



cover plate



clamp bottom



clamp top

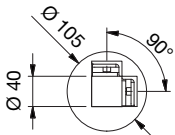
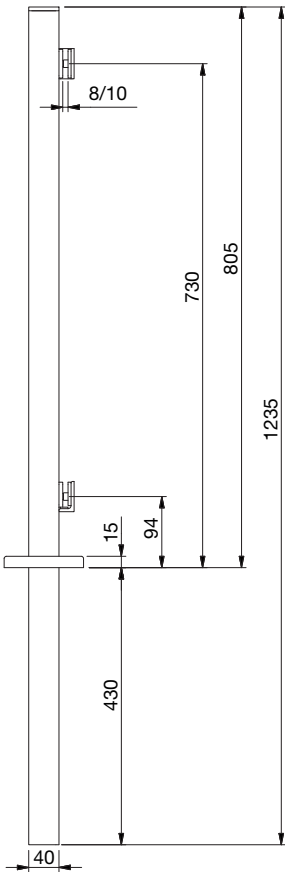


end cap





■ corner post set for cp-glass *barrier* for insertion into concrete foundation, 90°



INFO

You will find further information on our cp-glass *barrier* starting on page 228.

SET-7352VA2-800 8-10 mm

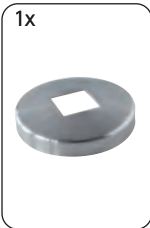


set comprised of



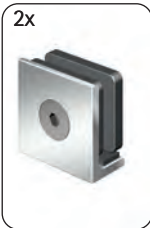
1x

post



1x

cover plate



2x

clamp bottom



2x

clamp top



1x

end cap

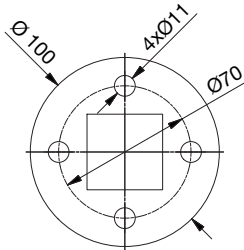
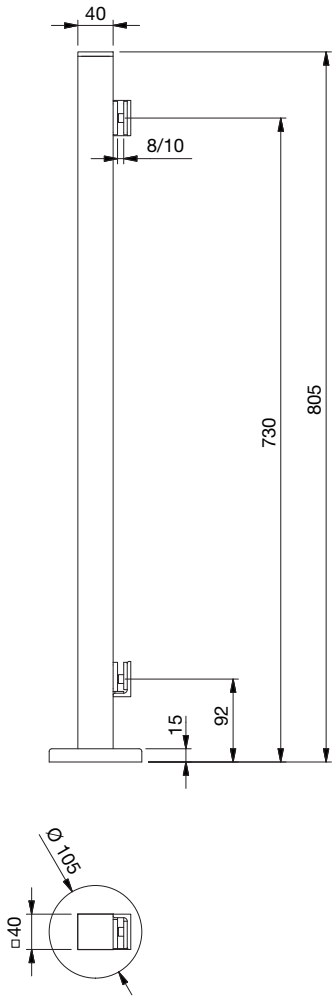
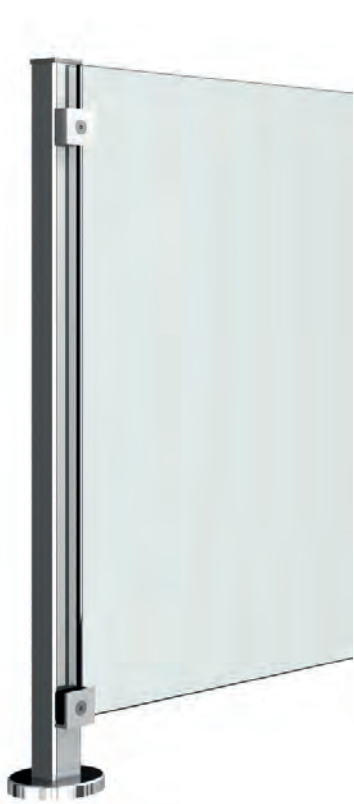


■ application of cp-glass *barrier*





■ end post set for cp-glass *barrier* for floor mounting, installable on right and left



INFO

You will find further information on our cp-glass *barrier* starting on page 228.


SET-7356VA2-800

  
8-10 mm

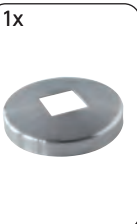


set comprised of

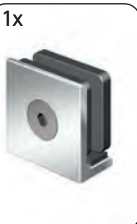
1x

  
post


1x

  
cover plate


1x

  
clamp bottom

1x

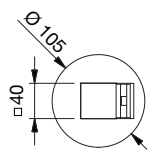
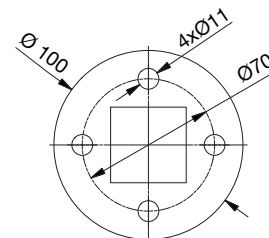
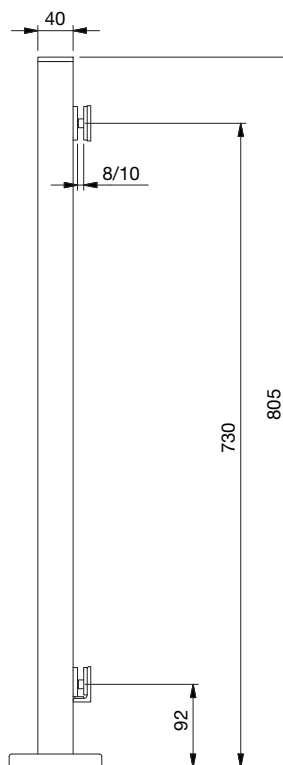
  
clamp top

1x

  
end cap



- middle post set for cp-glass *barrier* for floor mounting, 180°

**INFO**

You will find further information on our cp-glass *barrier* starting on page 228.

SET-7355VA2-800



8-10 mm



set comprised of



post



cover plate



clamp bottom



clamp top

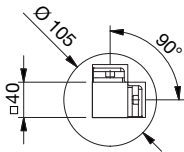
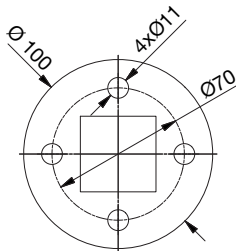
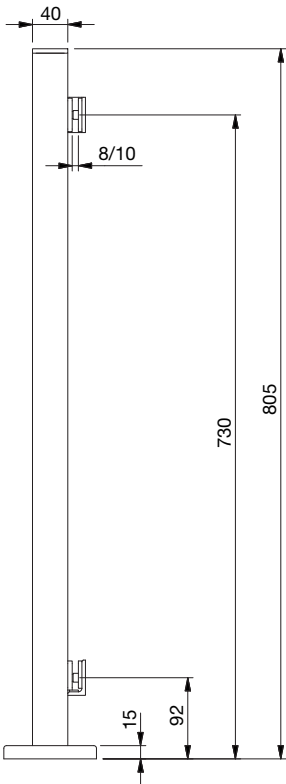


end cap





■ corner post set for cp-glass *barrier* for floor mounting, 90°



INFO

You will find further information on our cp-glass *barrier* starting on page 228.

SET-7357VA2-800



8-10 mm

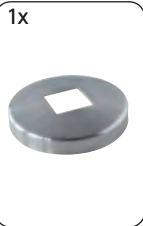


set comprised of



1x

post



1x

cover plate



2x

clamp bottom



2x

clamp top



1x

end cap



■ application of cp-glass *barrier*

