

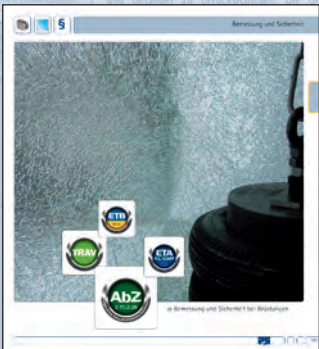


content



- cp-minisolar 38-59
 - for rectangular tubing
 - post variants 40-43
 - fastening set 44-45
 - for round tubing
 - post variants 46-50
 - fastening set 52-53
 - cp-minisolar individual parts 54-57
 - cp-minisolar sets for French balconies 58-59

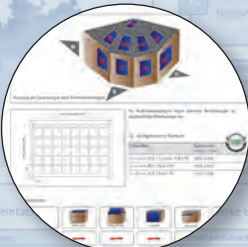
INFO CURRENT RULES REGARDING SOLAR BALUSTRADE GLAZING



Armed with information on the safety aspects of balustrades, you will confidently follow the latest regulations and guidelines when planning your projects. This saves you time and money. We can also extend this service with personal consultation. Talk to us.



general information
page 224



dimensions
page 225



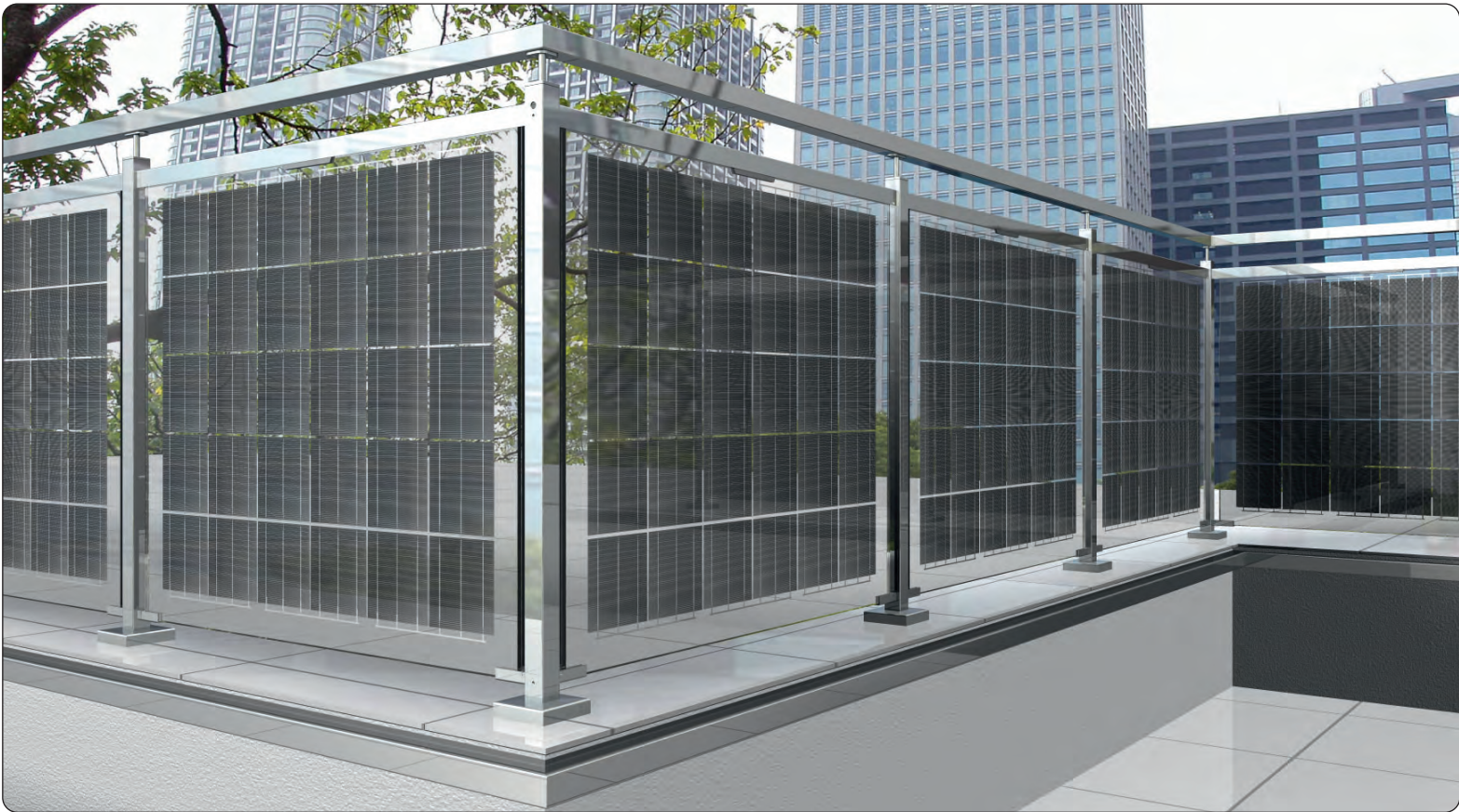
advantages
page 226



■ cp-minisolar



cp-minisolar for rectangular tubing

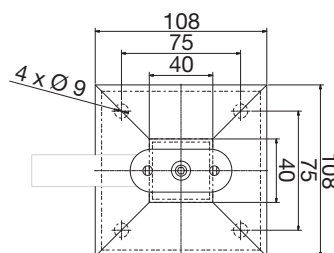
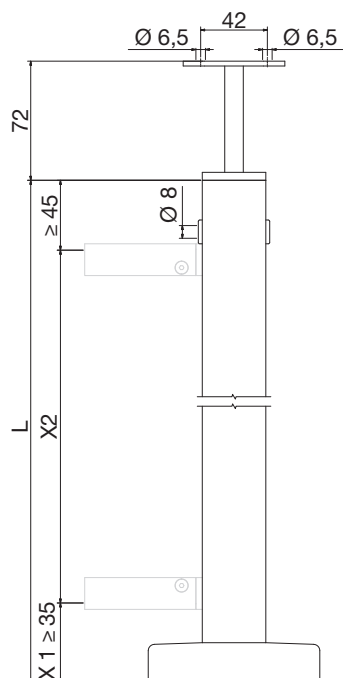


selection of post variants





■ end post set for cp-mini**solar**



Please specify when ordering:

- X1 (upper edge of floor to bottom edge of glass):

mm

- X2 (glass height):

mm

- L (total length):

mm

102290PSA2-S

11,52 mm + PV

INFO

You will find further information on our solar system starting on page 224.

- fastening set starting on page 44
- handrail accessories starting on page 173



set comprised of



102290-1PSA2



10238940A4



10209640A2



10205212A2



10205900A2



S7991A2D6X12



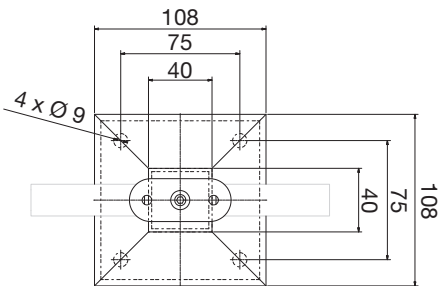
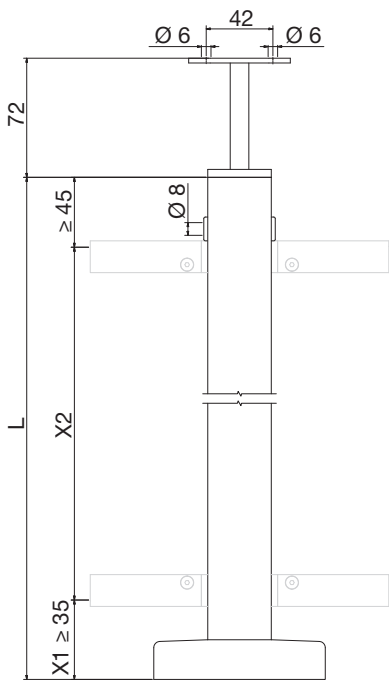
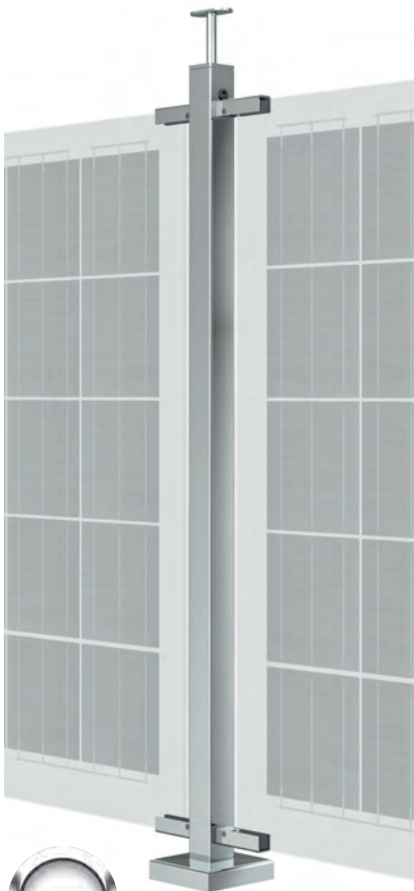
9407-2EPDM



9407-1EPDM



middle post set for cp-minisolar



Please specify when ordering:

• X1 (upper edge of floor to bottom edge of glass):

mm

• X2 (glass height):

mm

• L (total length):

mm

102291PSA2-S



11,52 mm + PV

INFO

You will find further information on our solar system starting on page 224.

- fastening set starting on page 44
- handrail accessories starting on page 173

set comprised of



102290-1PSA2



10238940A4



10209640A2



10205212A2



10205900A2



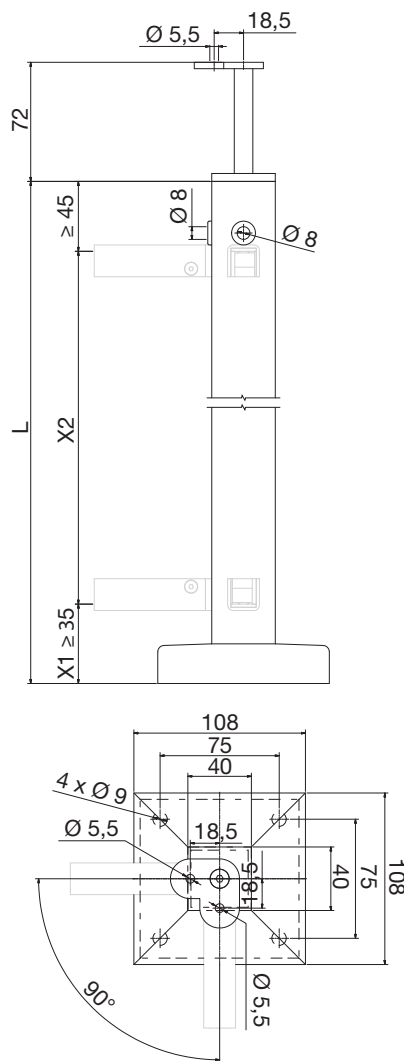
S7991A2D6X12



9407-2EPDM



- corner post set for cp-mini**solar**



Please specify when ordering:

- X1 (upper edge of floor to bottom edge of glass):

mm

- X2 (glass height):

mm

- L (total length):

mm

102292PSA2-S



11,52 mm + PV

INFO

You will find further information on our solar system starting on page 224.

- fastening set starting on page 44
- handrail accessories starting on page 173



set comprised of



102291-1PSA2



10238940A4



10209640A2



10205212A2



10205900A2



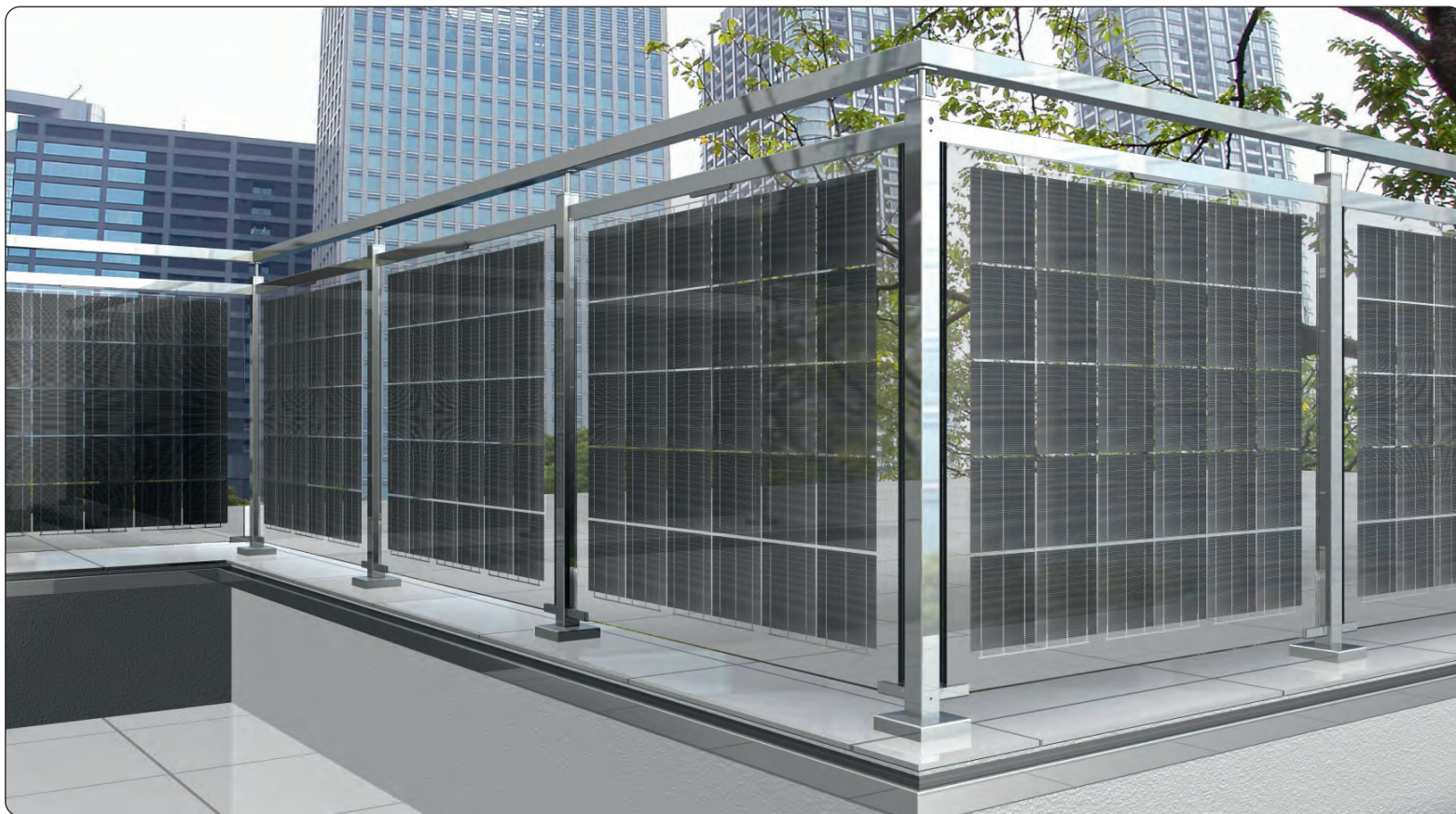
S7991A2D6X12



9407-1EPDM



■ cp-minisolar for rectangular tubing



fastening set per filling

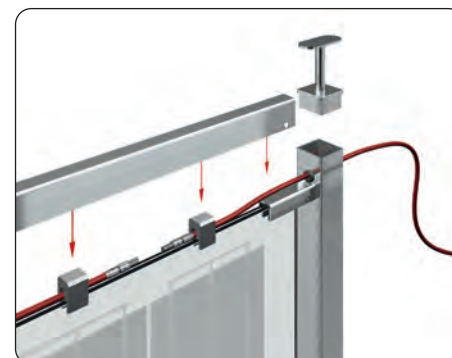


INFO

The quantity of fastening sets equals the number of railing segments.

■ cp-mini**solar** fastening set

* cuttable



example application


Please specify when ordering:

- quantity of fastening sets
piece

Fastening set suitable for VSG 11.52 mm
plus solar cells (≤ 0.45 mm).
Other glass thicknesses available upon
request. Glass is not included in the set!

Customer must shorten profile to required
length and drill second countersunk hole.

SET-9410VA-12S


11,52 mm + PV

set comprised of

4x



9410VA-12S

1x



9409VA-1500

5x



9408POM-12

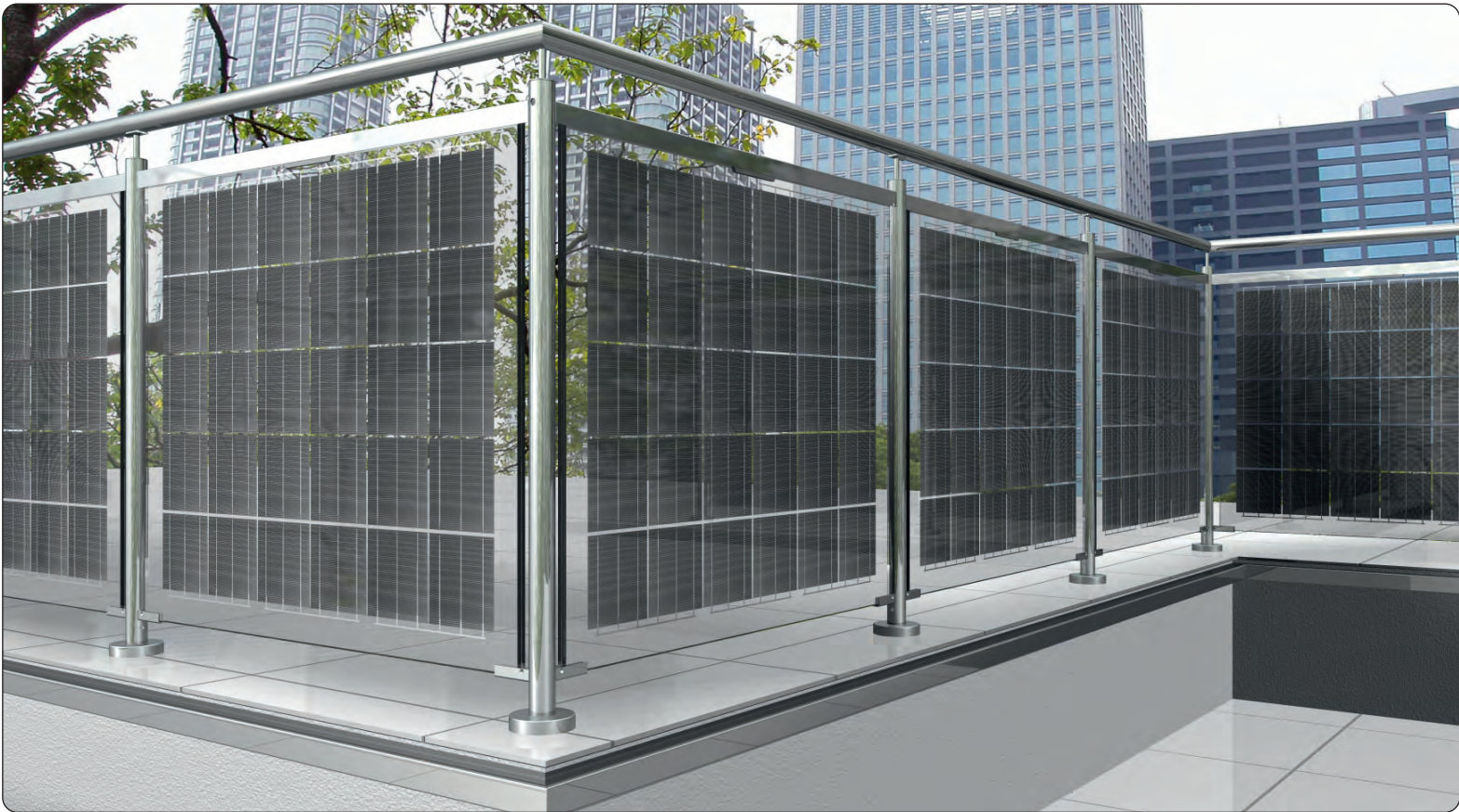
4x



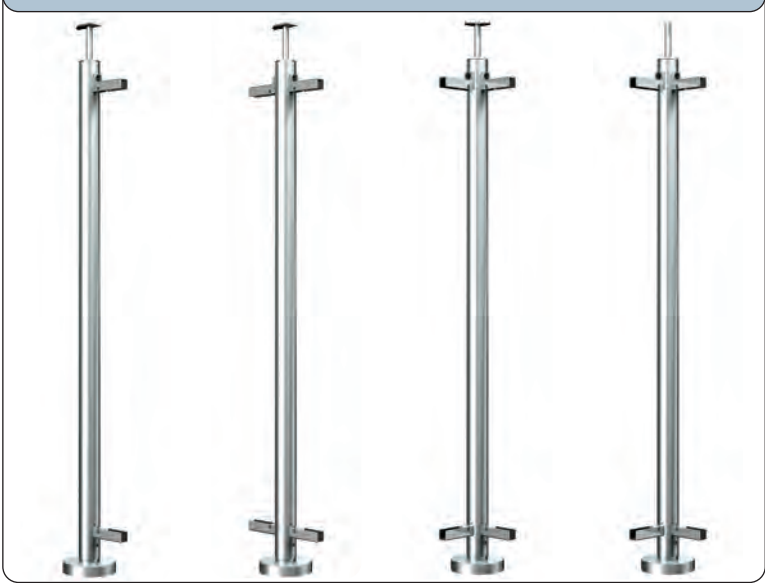
S6912A2D6x30



cp-minisolar for round tubing

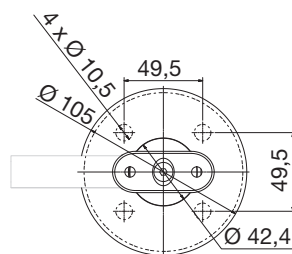
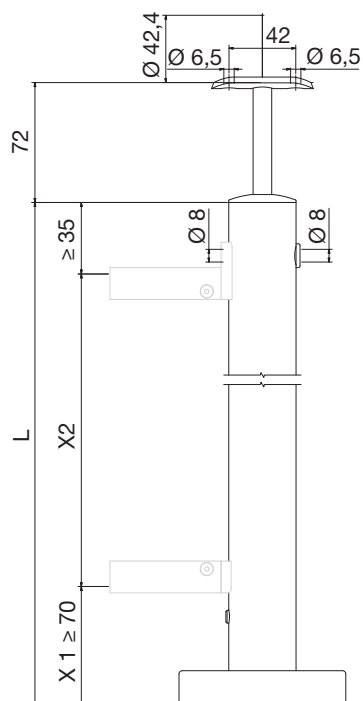


selection of post variants





■ end post set for cp-mini**solar**



Please specify when ordering:

- X1 (upper edge of floor to bottom edge of glass):

mm

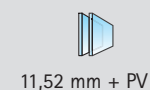
- X2 (glass height):

mm

- L (total length):

mm

102293PSA2-S



11,52 mm + PV

INFO

You will find further information on our solar system starting on page 224.

- fastening set starting on page 52
- handrail accessories starting on page 150



set comprised of

1x



10209742A2

1x



10211642A2

1x



102293-1PSA2

1x



10204942A2

1x



10205212A2

1x



10206033A2

1x



S7991A2D6X12

1x



9407-2EPDM

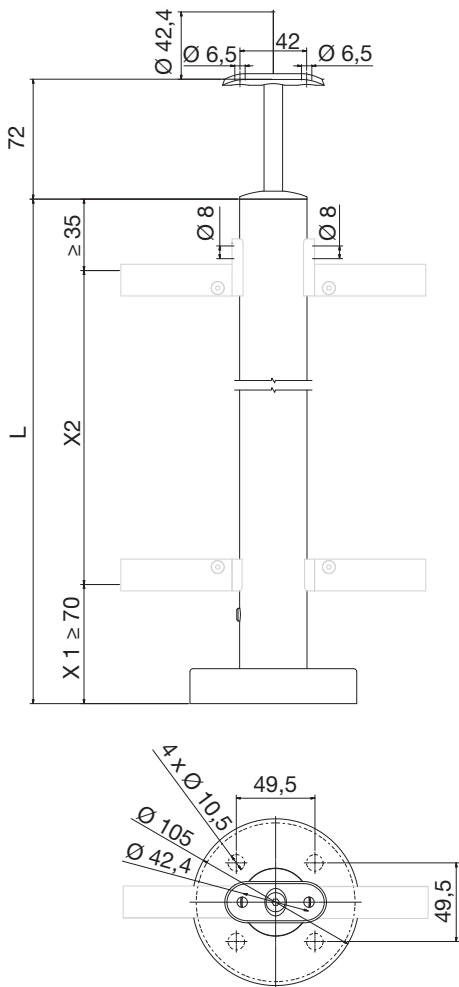
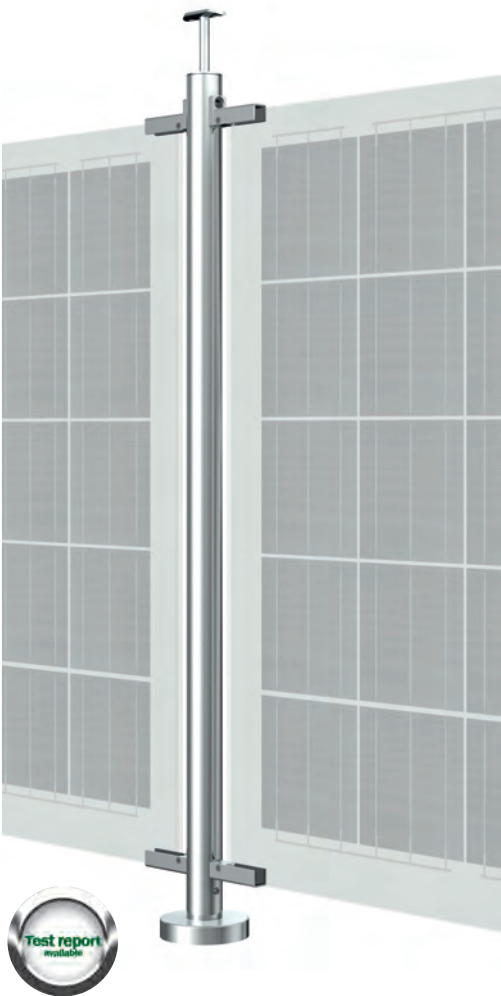
2x



9407-1EPDM



middle post set for cp-minisolar



Please specify when ordering:

- X1 (upper edge of floor to bottom edge of glass):
mm
- X2 (glass height):
mm
- L (total length):
mm

102294PSA2-S

11,52 mm + PV

INFO

You will find further information on our solar system starting on page 224.

- fastening set starting on page 52
- handrail accessories starting on page 150



set comprised of



1x 10209742A2



1x 10211642A2



1x 102294-1PSA2



1x 10204942A2



1x 10205212A2



1x 10206033A2



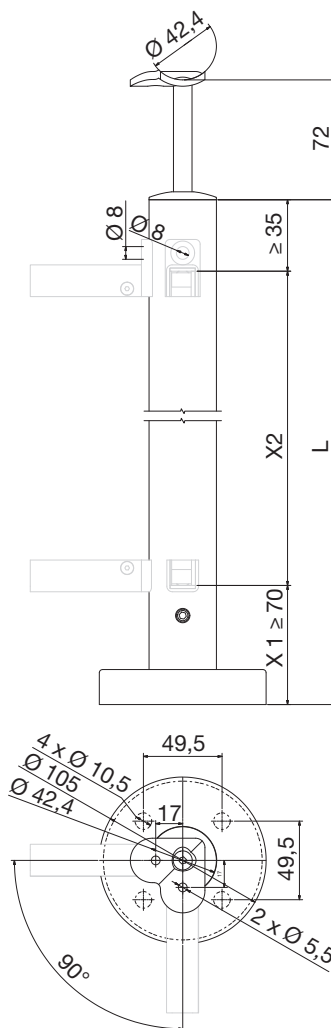
1x S7991A2D6X12



2x 9407-1EPDM



■ corner post set for cp-mini^{solar}



Please specify when ordering:

- X1 (upper edge of floor to bottom edge of glass):

mm

- X2 (glass height):

mm

- L (total length):

mm

102295PSA2-S

11,52 mm + PV

INFO

You will find further information on our solar system starting on page 224.

- fastening set starting on page 52
- handrail accessories starting on page 150



set comprised of

1x



10209742A2

1x



10211642A2

1x



102295-1PSA2

1x



10204942A2

1x



10205212A2

1x



10206233A2

1x



S7991A2D6X12

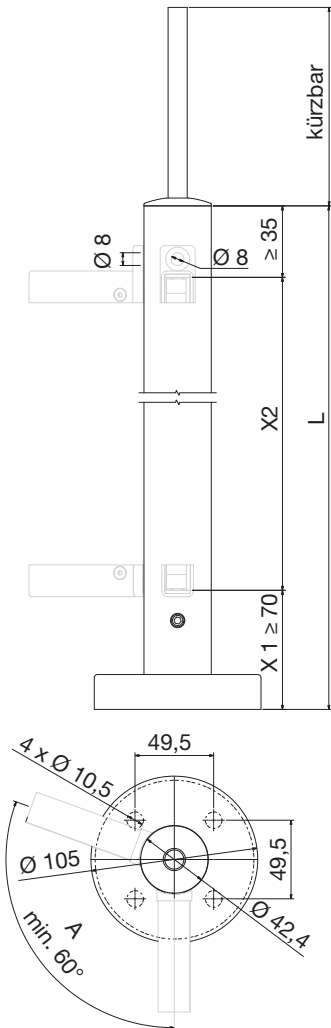
2x



9407-1EPDM



■ corner post set, variable, for cp-minisolar



Please specify when ordering:

- X1 (upper edge of floor to bottom edge of glass):
_____ mm
- X2 (glass height):
_____ mm
- L (total length):
_____ mm
- A (angle):
_____ °



102296PSA2-S

11,52 mm + PV

INFO

You will find further information on our solar system starting on page 224.

- fastening set starting on page 52
- handrail accessories starting on page 150



set comprised of



10209742A2



10211642A2



102295-1PSA2



10204942A2



10205312A2

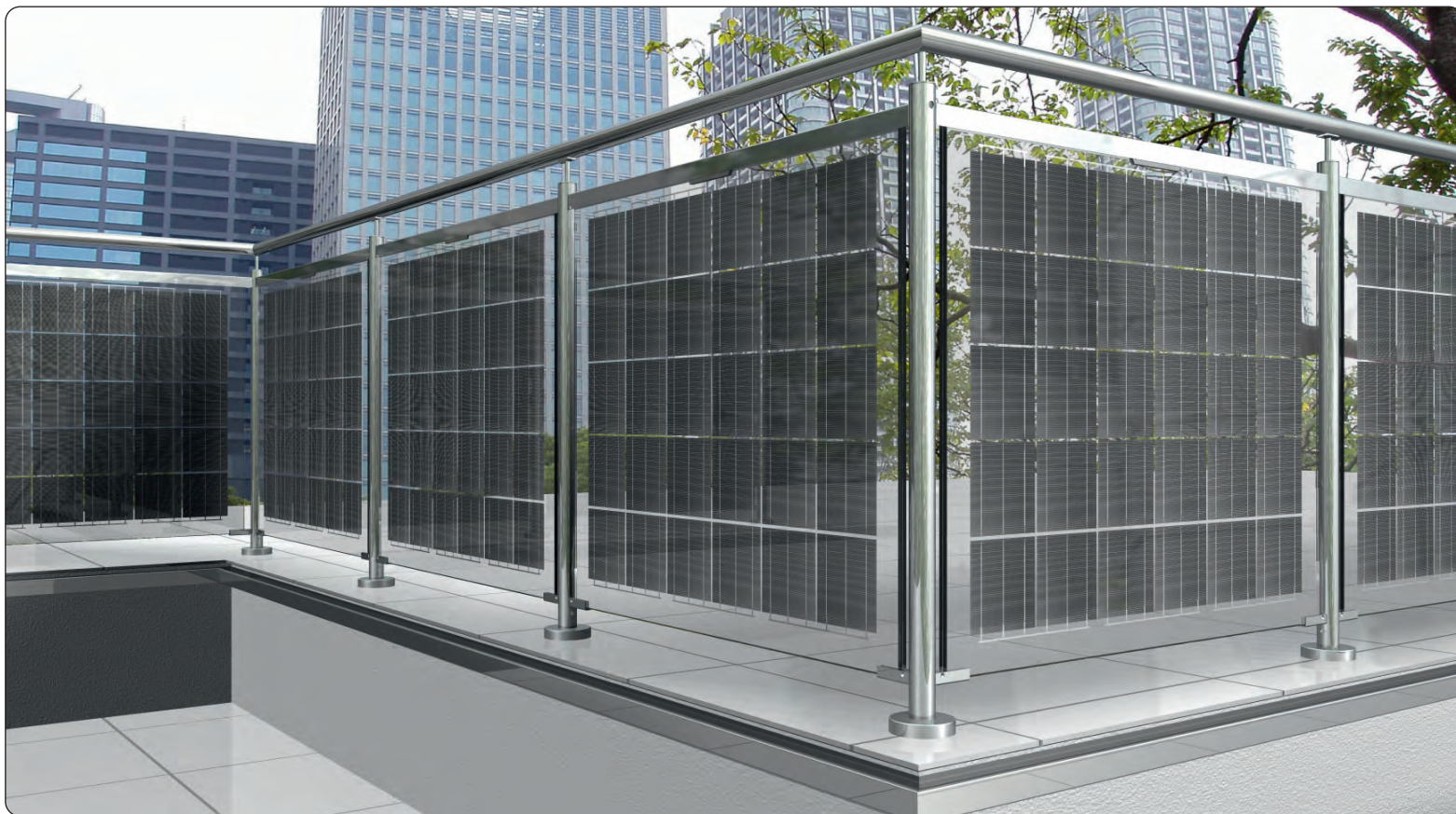


9407-1EPDM





■ cp-minisolar for round tubing



fastening set per filling



INFO

The quantity of fastening sets equals the number of railing segments.

■ cp-mini**solar** fastening set

* cuttable

1500*

example application

Please specify when ordering:

- quantity of fastening sets
piece

Fastening set suitable for VSG 11.52 mm plus solar cells (≤ 0.45 mm). Other glass thicknesses available upon request. Glass is not included in the set!

Customer must shorten profile to required length and drill second countersunk hole.

SET-9420VA-12S

11,52 mm + PV

set comprised of

2x

9420VA-EL-12

2x

9420VA-12S

1x

9419VA-1500

5x

9408POM-12

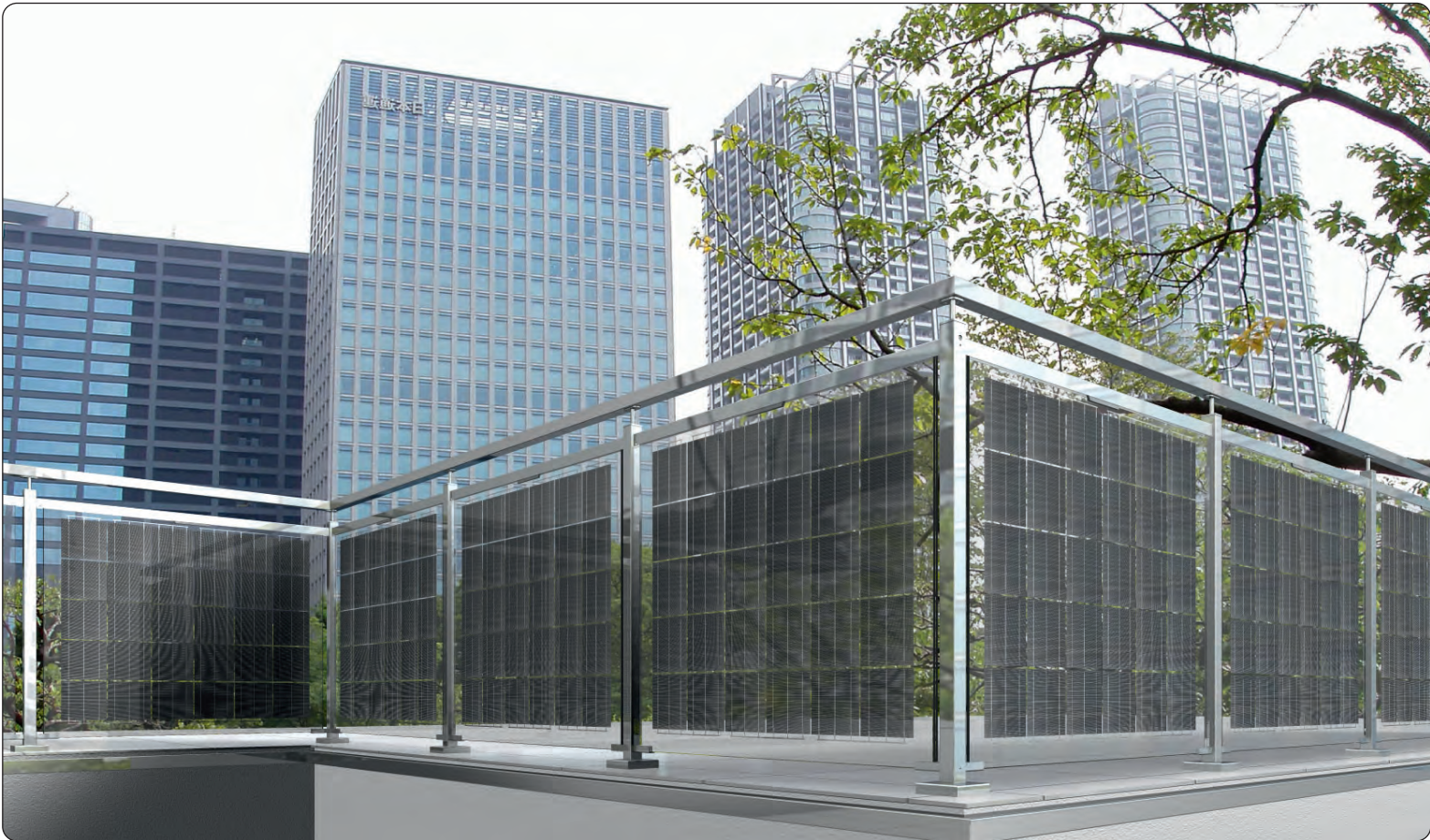
4x

S6912A2D6x30



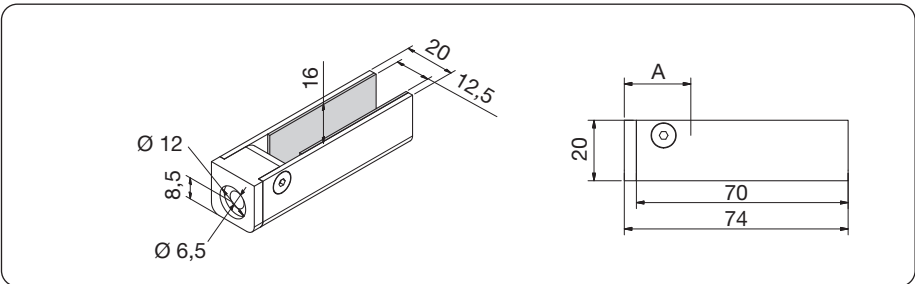
content

cp-minisolar individual parts 54-57





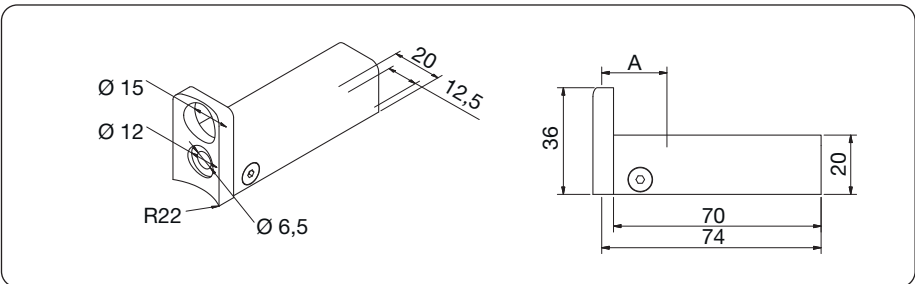
■ cp-mini**solar** for square tube



item no.	material	info	VSG	
9410VA-12S	A2/K240	180° straight	12 mm	

A = gap to subtract for glass 24 mm/fastening screw DIN 6912 M6 included in fastening set

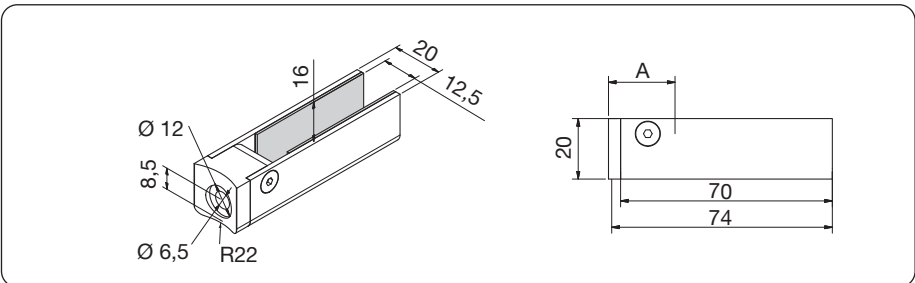
■ cp-mini**solar** for round tube



item no.	material	info	VSG	
9420VA-EL-12	A2/K240	180° straight	12 mm	

A = gap to subtract for glass 24 mm/fastening screw DIN 6912 M6 included in fastening set

■ cp-mini**solar** for round tube

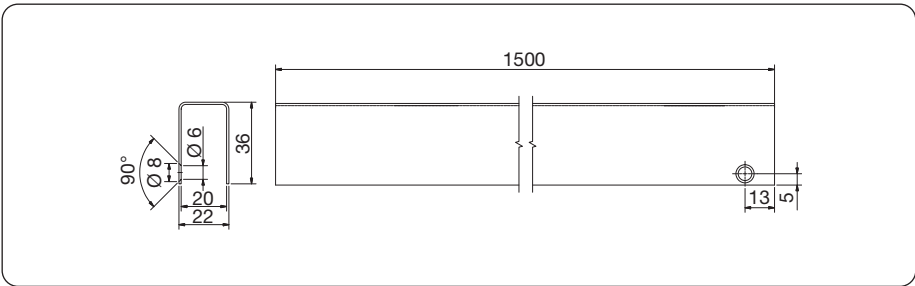


item no.	material	info	VSG	
9420VA-12S	A2/K240	180° straight	12 mm	

A = gap to subtract for glass 24 mm/fastening screw DIN 6912 M6 included in fastening set



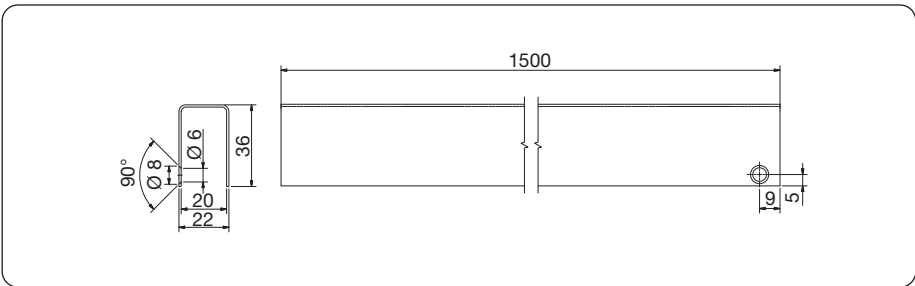
■ cable cover profile for cp-minisolar



item no.	material	info
9409VA-1500	A2/K240	length 1500mm can be shortend, for square tube

Customer must shorten profile to required length and drill second countersunk hole.

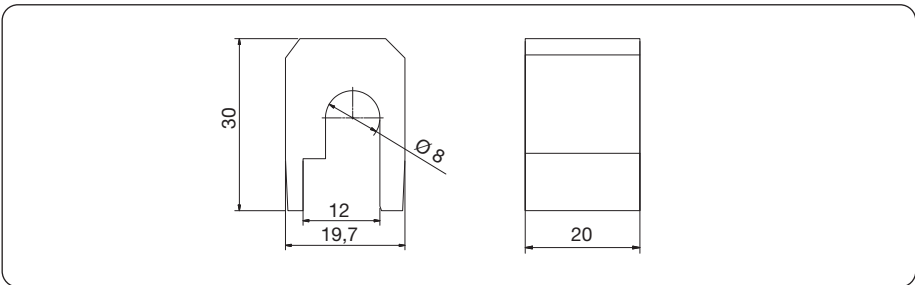
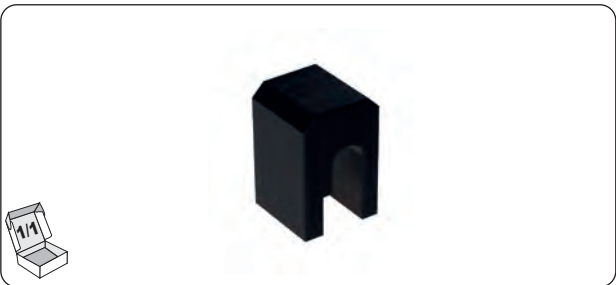
■ cable cover profile for cp-minisolar



item no.	material	info
9419VA-1500	A2/K240	length 1500mm can be shortend, for round tube

Customer must shorten profile to required length and drill second countersunk hole.

■ spacer for cable cover profile



item no.	material	info
9408POM-12	POM	for fastening and protecting the cables



■ accessories for cp-minisolar



item no.: 9407-2EPDM

dummy plug



item no.: 9407-1EPDM

plug with through-hole Ø 8 mm



item no.: S7991A2D6X12

countersunk female hex head screw DIN 7991 -
M6x12





item no.: S6912A2D6x30

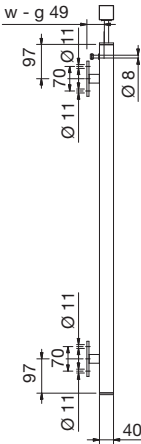
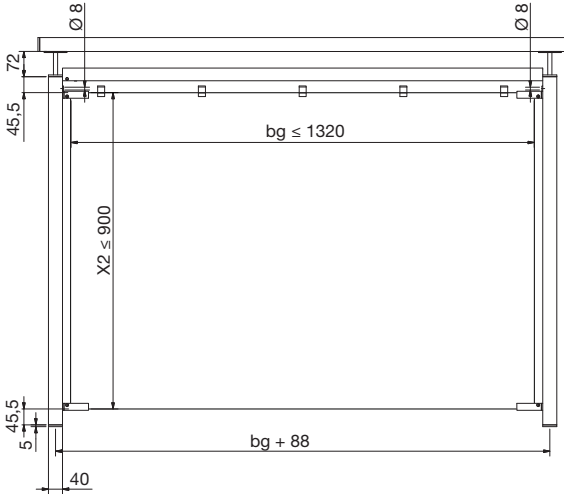
cylinder female hex head screw DIN 6912 -
M6x30 for cp-minisolar





cp-mini**solar** set with handrail and edge protection (cable cover)













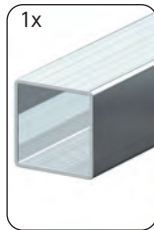




bg = glass width, w = wall, g = glass



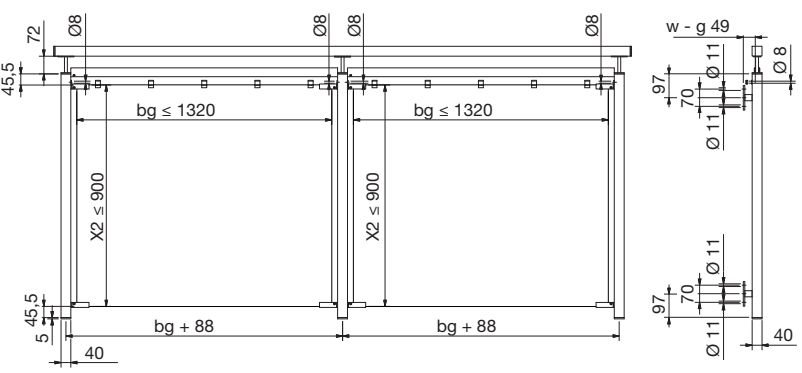

set comprised of

 1x 7262-1A2-L	 1x 7262-1A2-R	 4x 9410VA-12S	 4x 10209540A2	 2x 10209640A2	 2x 10205212A2	 2x 10205900A2	 1x 9407-2EPDM	 4x 9407-1EPDM
 1x 9409VA-1500	 5x 9408POM-12	 4x 1921VA	 1x 10234940A2	<div>Please specify when ordering: • X2 (glass height): _____ mm</div>				

including screw set; excluding fastening material for wall mounting




■ double-set with cp-mini^{solar} with handrail and edge protection (Kabelabdeckung)



Test report available


bg = glass width, w = wall, g = glass

set comprised of




1x

7262-1A2-L




1x

7262-2A2




1x

7262-1A2-R




8x

9410VA-12S




5x

10209540A2




3x

10209640A2




3x

10205212A2




3x

10205900A2




1x

9407-2EPDM




6x

9407-1EPDM




2x

9409VA-1500



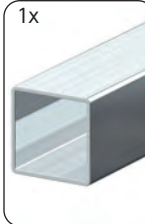
10x

9408POM-12



6x

1921VA



1x

10200740A2

Please specify when ordering:

• X2 (glass height): _____ mm

including screw set; excluding fastening material for wall mounting