

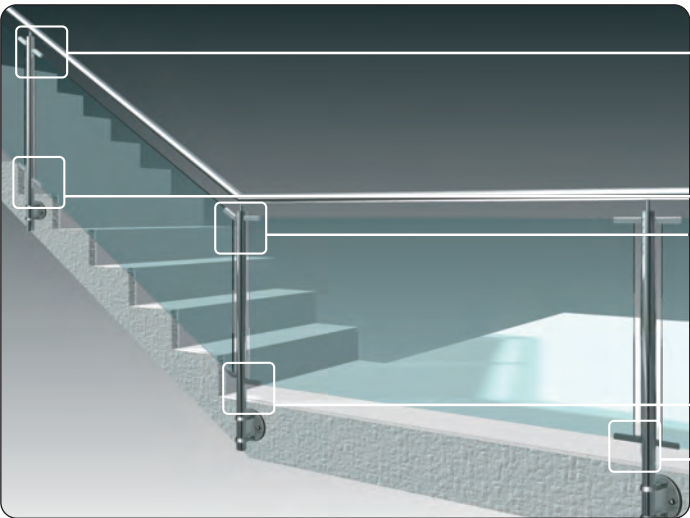


■ balustrade glazing with cp-mini

clamp fixtures for glass infills



cp-mini for round tube



9424VA
cp-mini at the top
30°-41° angular



9422VA
cp-mini at the bottom R22
30°-41° angular



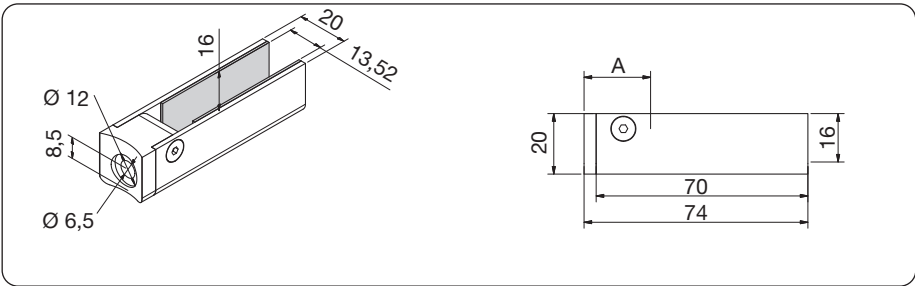
9423VA
cp-mini at the top
139°-150° angular



9421VA
cp-mini at the bottom R22
139°-150° angular



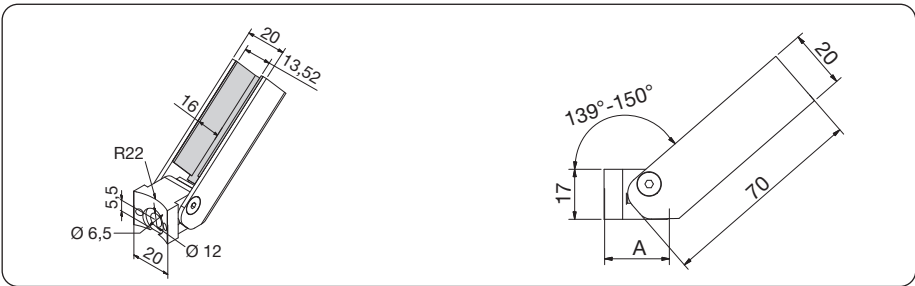
9420VA
cp-mini R22
180° straight



item no.	material	info	VSG	
9420VA	A2/K240	180° straight	13,52 mm	R22



A = reduction measurement glass
24 mm/fastening screw DIN 6912 M6



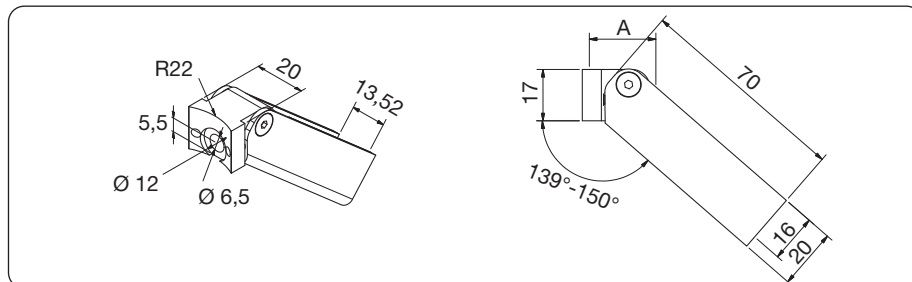
item no.	material	info	VSG	
9421VA	A2/K240	139° - 150° angular	13,52 mm	R22



A = reduction measurement glass
24 mm/fastening screw DIN 6912 M6



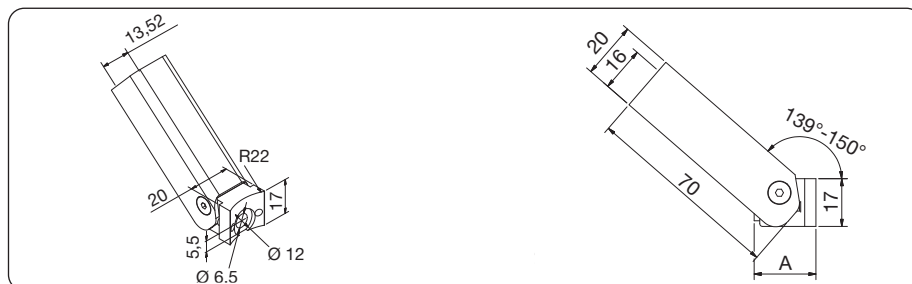
■ cp-mini for round tube



item no.	material	info	VSG	
9422VA	A2/K240	30° - 41° angular	13,52 mm	R22



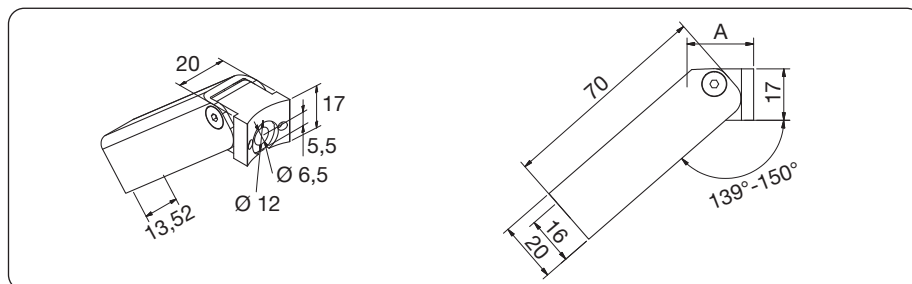
A = reduction measurement glass
24 mm/fastening screw DIN 6912 M6



item no.	material	info	VSG	
9423VA	A2/K240	139° - 150° angular	13,52 mm	R22



A = reduction measurement glass
24 mm/fastening screw DIN 6912 M6



item no.	material	info	VSG	
9424VA	A2/K240	30° - 41° angular	13,52 mm	R22

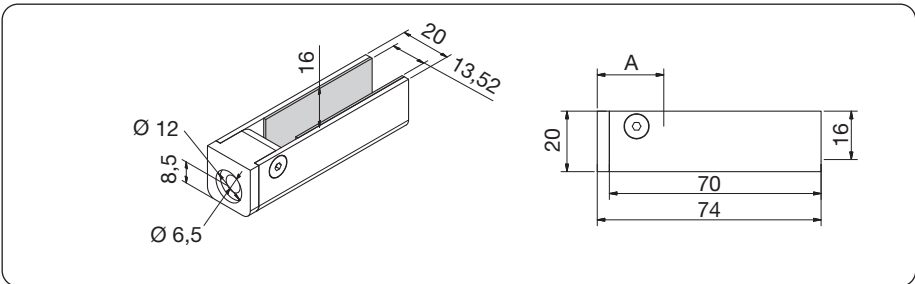


A = reduction measurement glass
24 mm/fastening screw DIN 6912 M6

clamp fixtures for glass infills



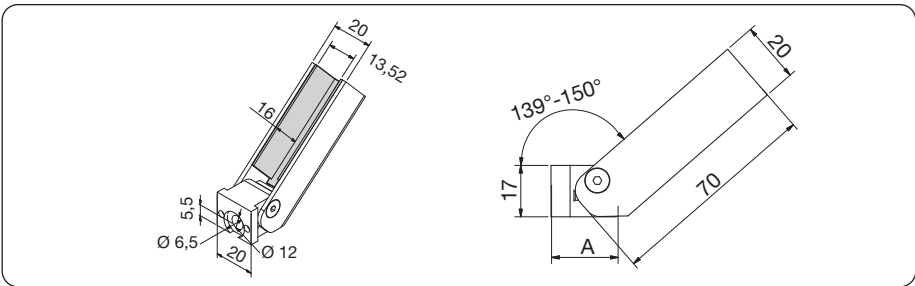
cp-mini für Flachanschluss



item no.	material	info	VSG	
9410VA	A2/K240	180° straight	13,52 mm	



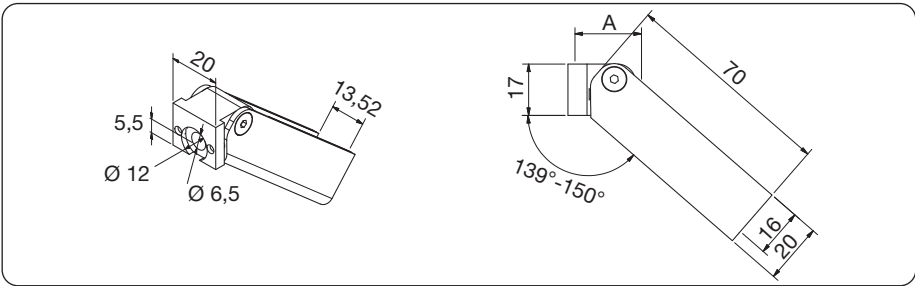
A = reduction measurement glass
24 mm/fastening screw DIN 6912 M6



item no.	material	info	VSG	
9411VA	A2/K240	139° - 150° angular	13,52 mm	



A = reduction measurement glass
24 mm/fastening screw DIN 6912 M6



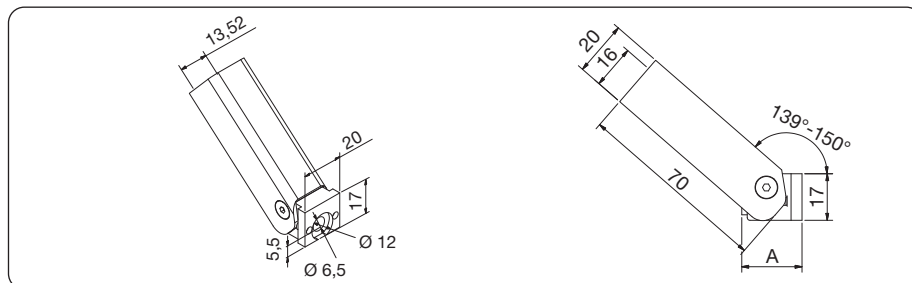
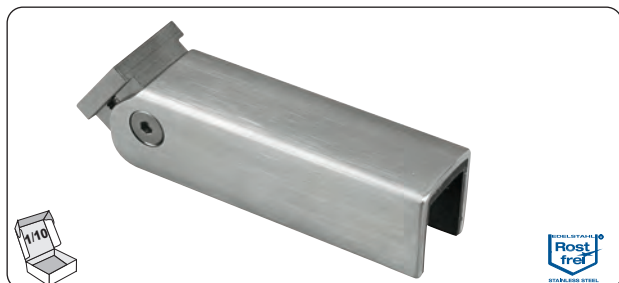
item no.	material	info	VSG	
9412VA	A2/K240	30° - 41° angular	13,52 mm	



A = reduction measurement glass
24 mm/fastening screw DIN 6912 M6



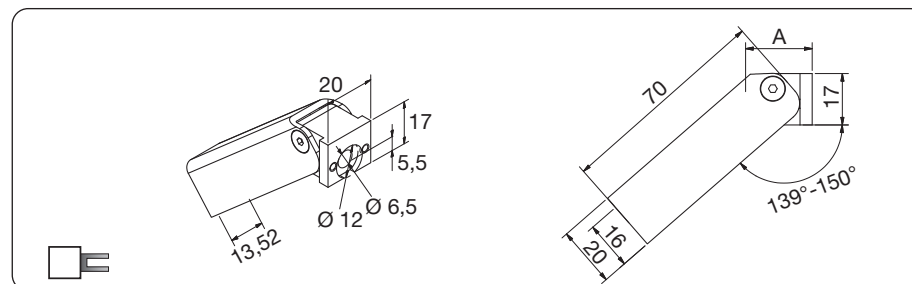
■ cp-mini für Flachanschluss



item no.	material	info	VSG	
9413VA	A2/K240	139° - 150° angular	13,52 mm	



A = reduction measurement glass
24 mm/fastening screw DIN 6912 M6



item no.	material	info	VSG	
9414VA	A2/K240	30° - 41° angular	13,52 mm	



A = reduction measurement glass
24 mm/fastening screw DIN 6912 M6

■ INFO



treatment products
page 183



application cp-mini