



content

- point fixings according to TRAV..... 110-115
- fixed mounting brackets 116-119



INFO

CURRENT RULES REGARDING TRAV

Armed with information on the safety aspects of balustrades, you will confidently follow the latest regulations and guidelines when planning your projects. This saves you time and money. We can also extend this service with personal consultation. Talk to us.

planning process
page 234

overview
page 235

design table Kat C
page 236

checklist
page 240



- point fixings according to TRAV



- point fixings according to TRAV

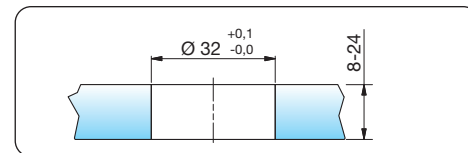
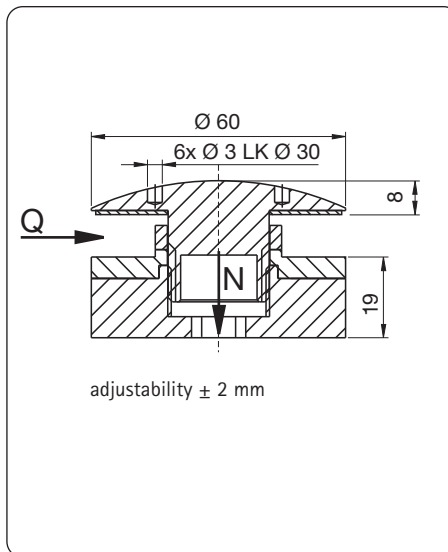


- fixed mounting bracket for TRAV





point fixings according to TRAV



item no.: 7016

point fixing (TRAV) Ø 60
with aluminum center ring

head: rounded

material: A2

max. Q: 4,0 kN

max. N: 6,0 kN

7016VA  8 - 12 mm

7016VA-16  13 - 16 mm

7016VA-20  17 - 20 mm

7016VA-24  21 - 24 mm

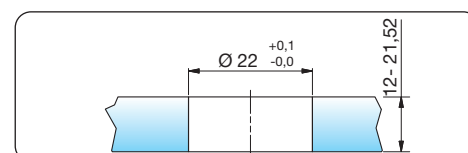
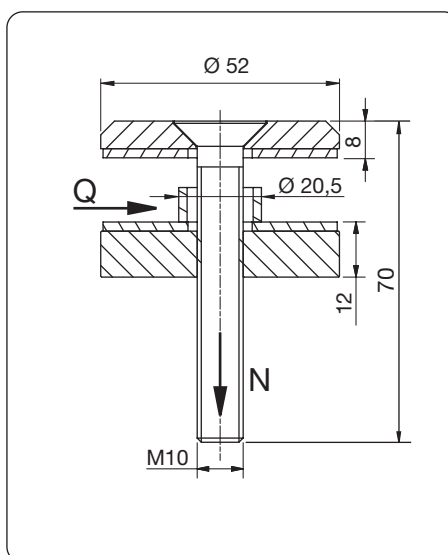
accessories



Z058



M8



item no.: 7078

point fixing (TRAV) Ø 52
with EPDM

head: flat

material: A2

max. Q: 4,0 kN

max. N: 6,0 kN

includes



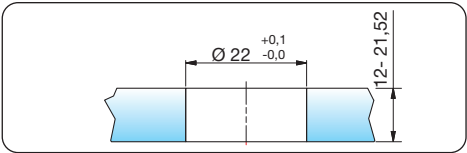
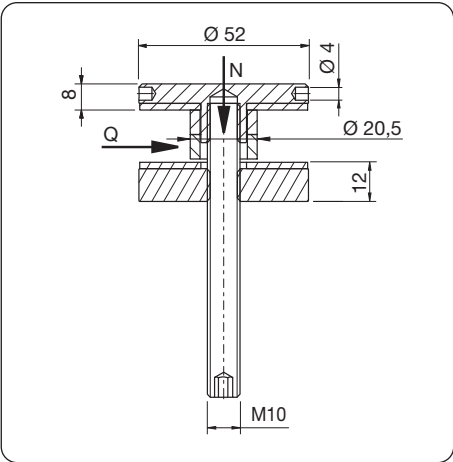
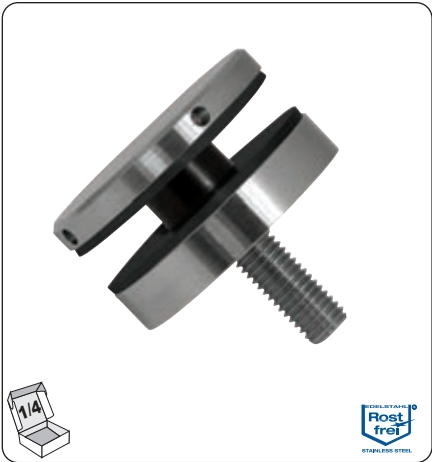
DIN7991* M10 x 70 mm

*full-threaded screw



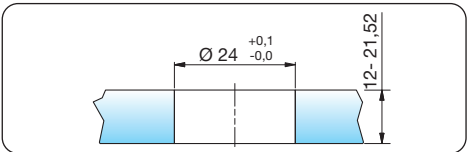
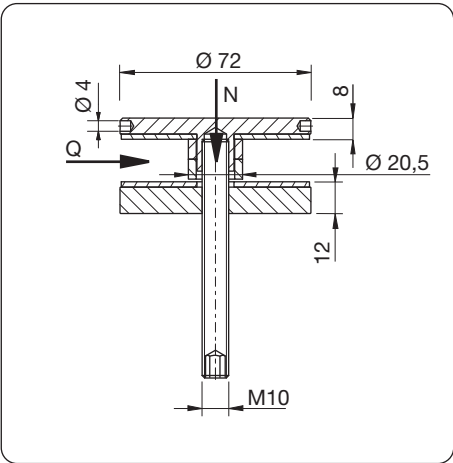


■ point fixings according to TRAV



item no.: 7072	
point fixing (TRAV)	Ø 52
head:	flat
material:	A2
max. Q: 4,0 kN	max. N: 6,0 kN

accessories	includes
Z060	DIN913 M10 x 90 mm



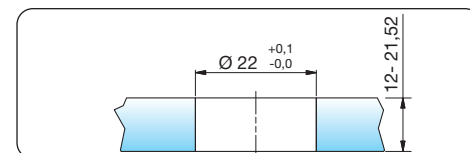
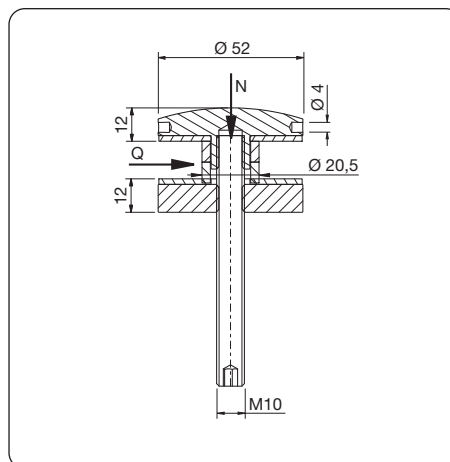
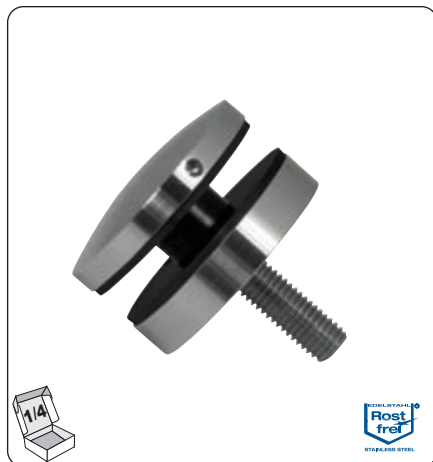
item no.: 7073	
point fixing (TRAV)	Ø 72
head:	flat
material:	A2
max. Q: 4,0 kN	max. N: 6,0 kN

accessories	includes
Z060	DIN913 M10 x 90 mm





■ point fixings according to TRAV



item no.: 7076

point fixing (TRAV) Ø 52

head: rounded

material: A2

max. Q: 4,0 kN

max. N: 6,0 kN

accessories

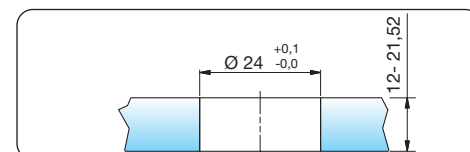
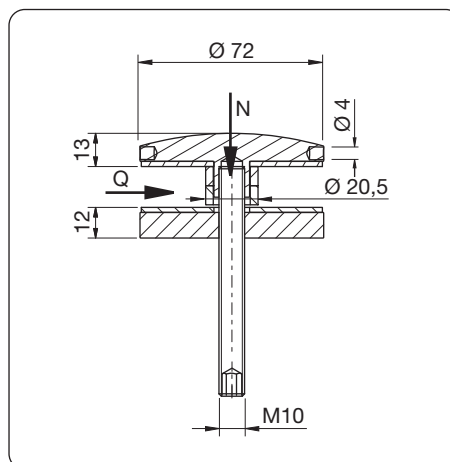


Z060

includes



DIN913 M10 x 90 mm



item no.: 7077

point fixing (TRAV) Ø 72

head: rounded

material: A2

max. Q: 4,0 kN

max. N: 6,0 kN

accessories



Z060

includes



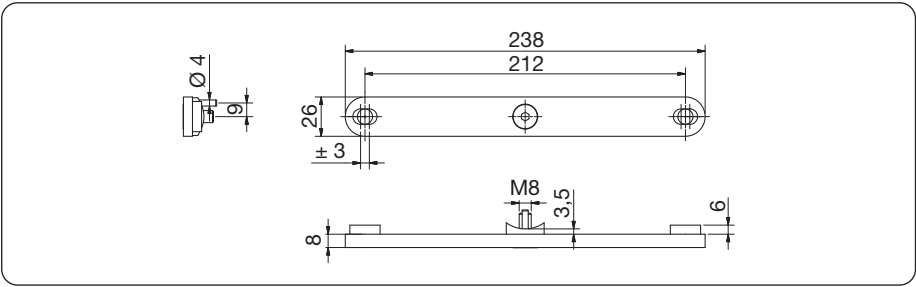
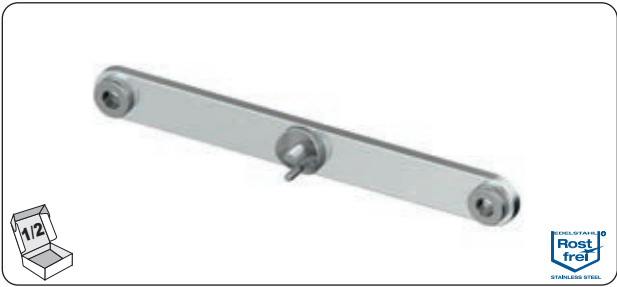
DIN913 M10 x 90 mm



clamp fixtures for glass infills

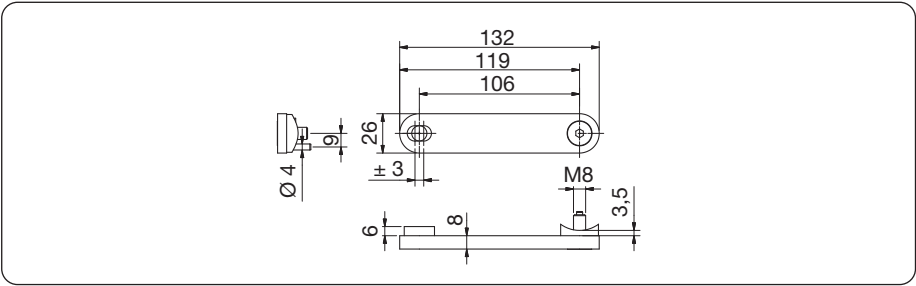


fixed 2-arm mounting bracket

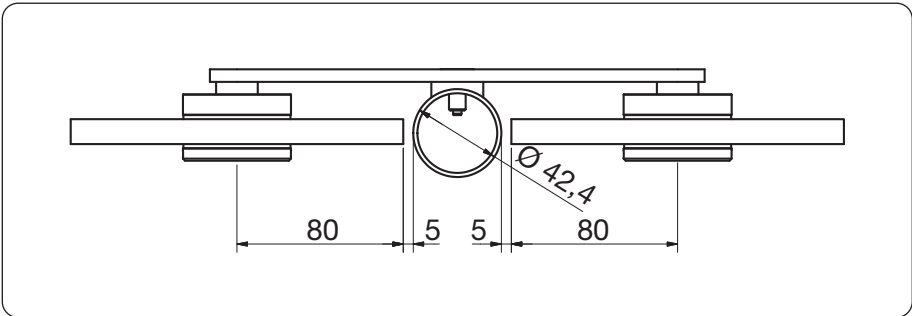


item no.	material	info	Ø tube	material thickness	
SET-7040VA	A2/K240	fixed mounting bracket with round tube adapter and detent	42,4	8 mm	

fixed 1-arm mounting bracket



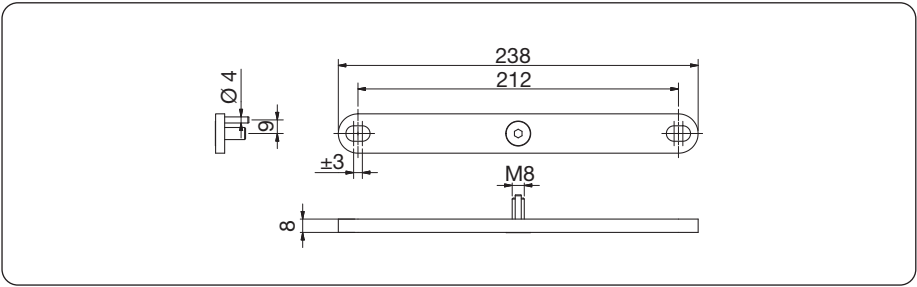
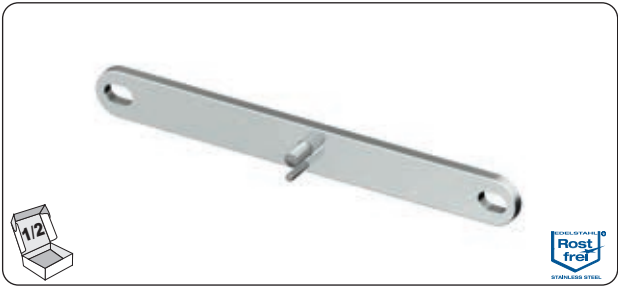
item no.	material	info	Ø tube	material thickness	
SET-7041VA	A2/K240	fixed mounting bracket with round tube adapter and detent	42,4	8 mm	





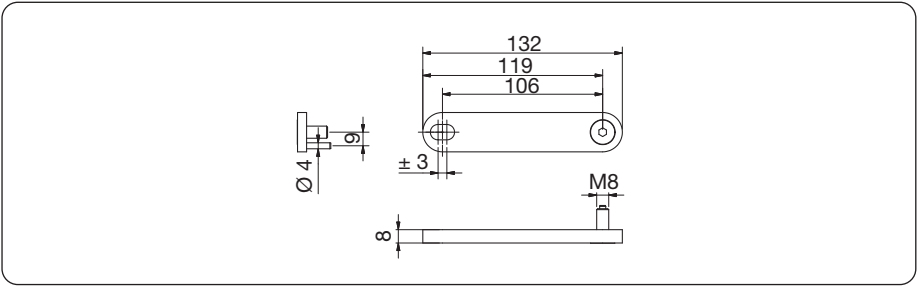
fixed mounting bracket

fixed 2-arm mounting bracket

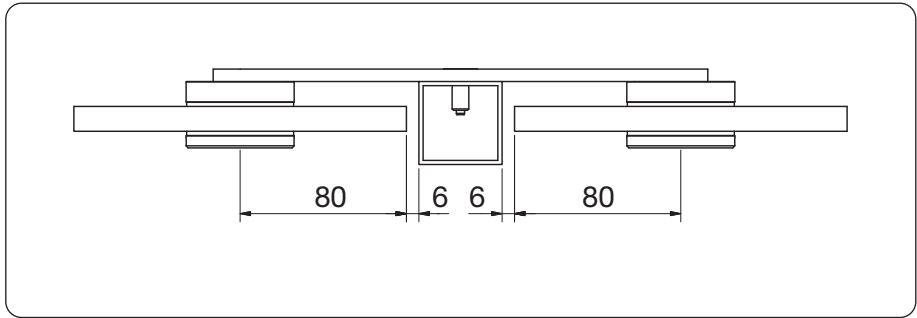


item no.	material	info	material thickness
SET-7042VA	A2/K240	fixed mounting bracket with detent	8 mm

fixed 1-arm mounting bracket

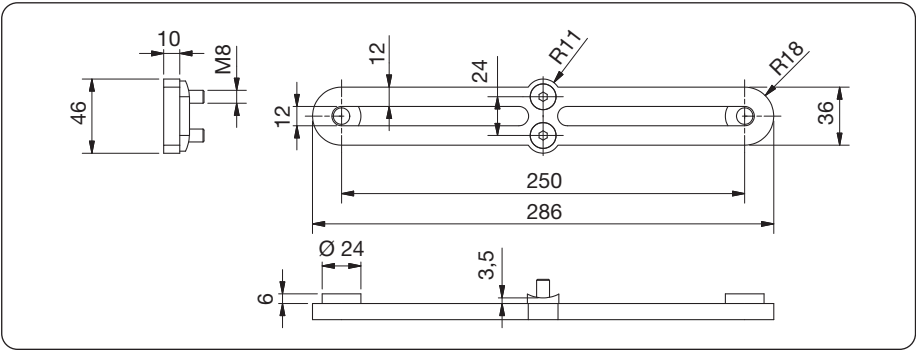


item no.	material	info	material thickness
SET-7043VA	A2/K240	fixed mounting bracket with detent	8 mm



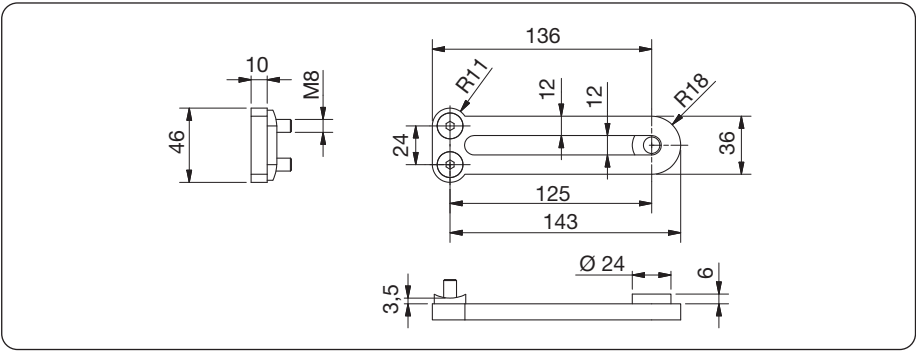


fixed 2-arm mounting bracket

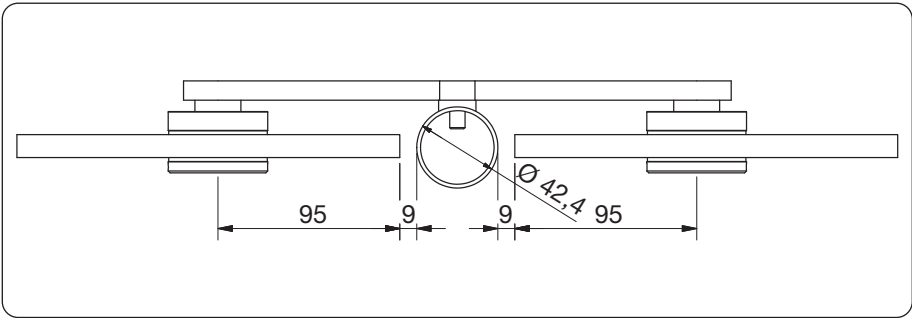


item no.	material	info	Ø tube	material thickness	
SET-7022VA	A2/K240	fixed mounting bracket with round tube adapter	42,4	10 mm	

fixed 1-arm mounting bracket



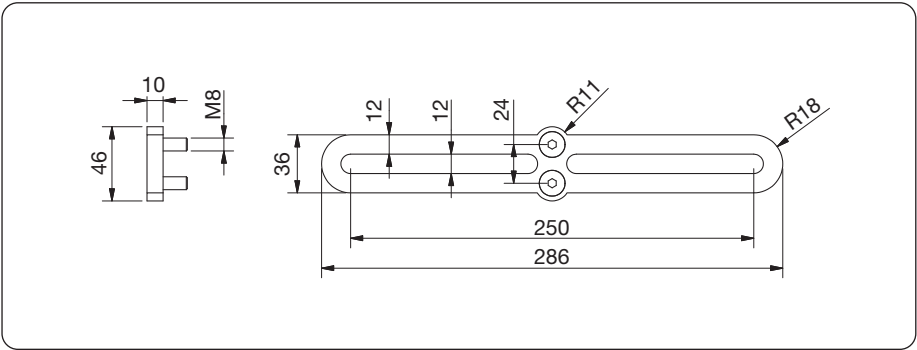
item no.	material	info	Ø tube	material thickness	
SET-7023VA	A2/K240	fixed mounting bracket with round tube adapter	42,4	10 mm	





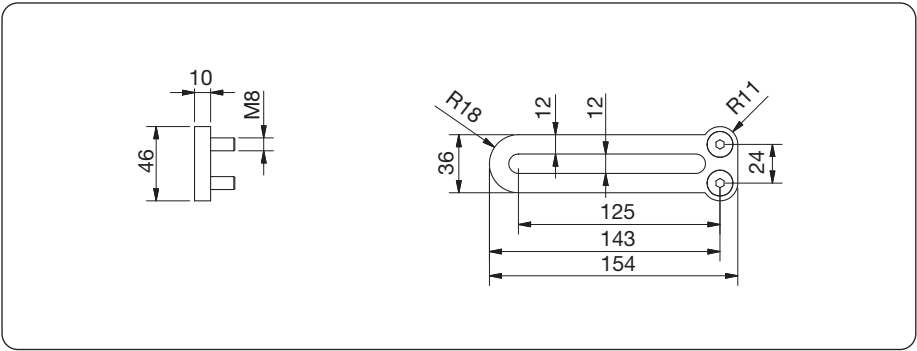
fixed mounting bracket

fixed 2-arm mounting bracket



item no.	material	info	material thickness
SET-7026VA	A2/K240	fixed mounting bracket	10 mm

fixed 1-arm mounting bracket



item no.	material	info	material thickness
SET-7027VA	A2/K240	fixed mounting bracket	10 mm

