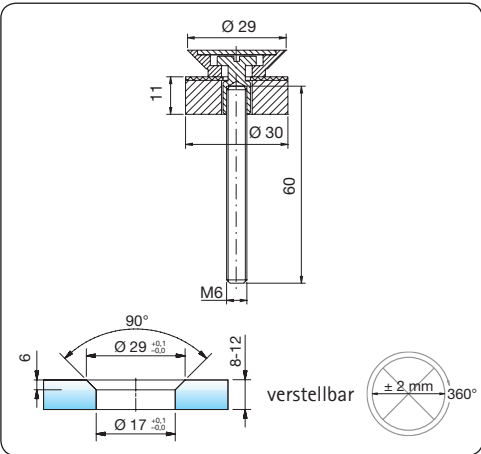





Punkthalter flächenbündig




Art. Nr.: 7656

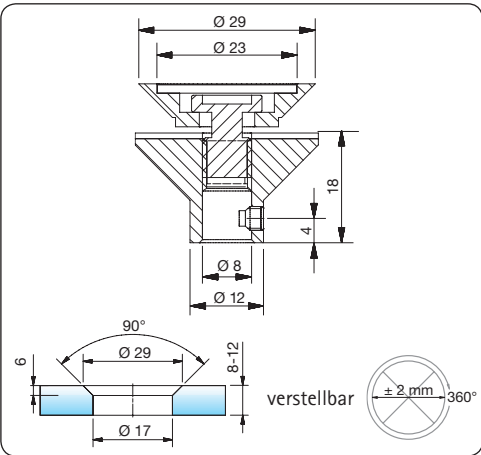
Punkthalter mit POM-Senkbuchse Ø 29 mm
Kunststoff-Unterlegscheibe

Belastungswerte: maxQ = 1,0 kN

Plattendicke  8-12 mm


Material/Oberfläche VA = Edelstahl (A2)

 VA




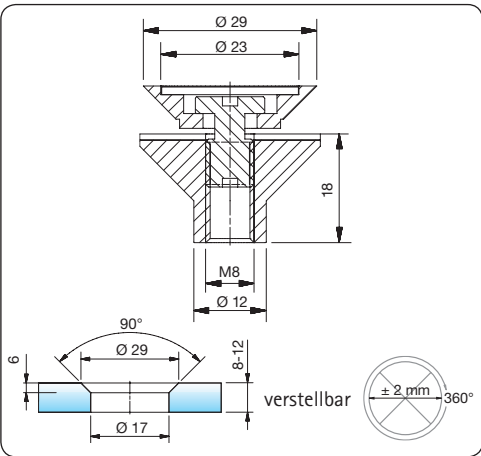
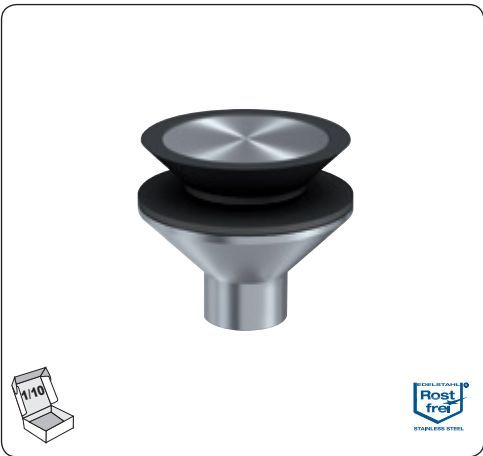
Art. Nr.: 7700

Punkthalter mit POM-Senkbuchse Ø 29 mm
Kunststoff-Unterlegscheibe,
mit Adapteranschluss Ø 8 mm

Plattendicke  8-12 mm


Material/Oberfläche VA = Edelstahl (A2)

 VA




Art. Nr.: 7701

Punkthalter mit POM-Senkbuchse Ø 29 mm
Kunststoff-Unterlegscheibe,
mit M8-Anschluss

Plattendicke  8-12 mm

Material/Oberfläche VA = Edelstahl (A2)

 VA